

Datasheet for ABIN653356
anti-DIAPH2 antibody (AA 870-899)

3 Images

[Go to Product page](#)

Overview

Quantity:	400 µL
Target:	DIAPH2
Binding Specificity:	AA 870-899
Reactivity:	Human
Host:	Rabbit
Clonality:	Polyclonal
Conjugate:	This DIAPH2 antibody is un-conjugated
Application:	Western Blotting (WB), Flow Cytometry (FACS), Immunohistochemistry (Paraffin-embedded Sections) (IHC (p))

Product Details

Immunogen:	This DIAPH2 antibody is generated from rabbits immunized with a KLH conjugated synthetic peptide between 870-899 amino acids from the Central region of human DIAPH2.
Clone:	RB23866
Isotype:	Ig Fraction
Purification:	This antibody is purified through a protein A column, followed by peptide affinity purification.

Target Details

Target:	DIAPH2
Alternative Name:	DIAPH2 (DIAPH2 Products)

Target Details

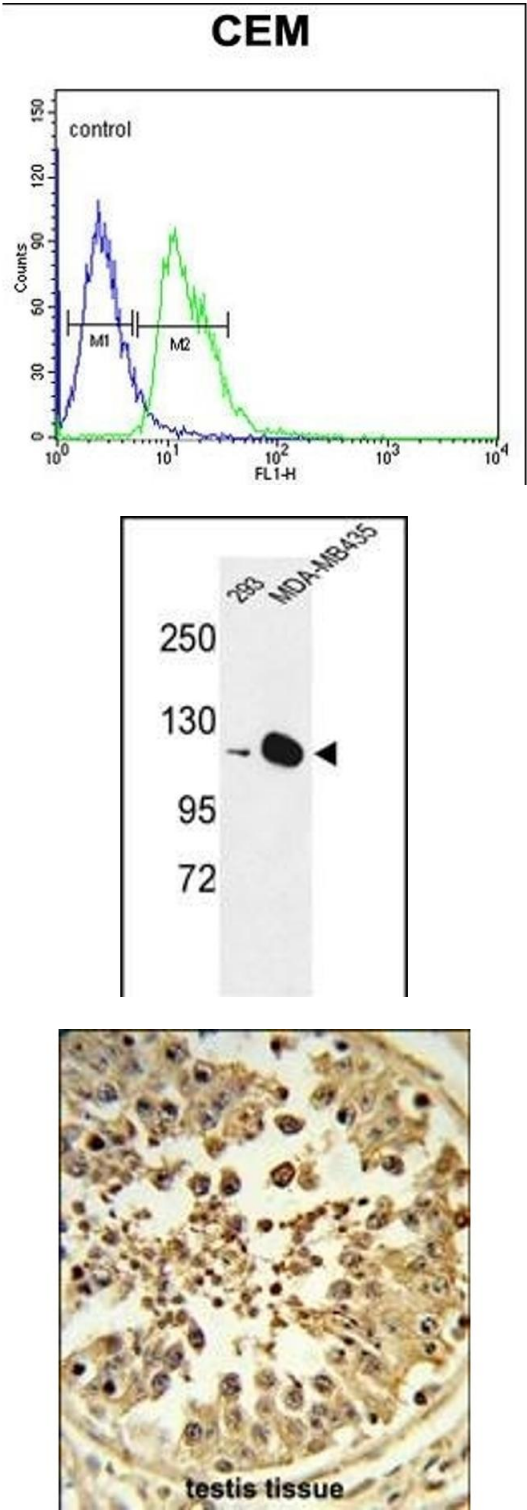
Background:	DIAPH2 belongs to the diaphanous subfamily of the formin homology family of proteins. This gene may play a role in the development and normal function of the ovaries. Defects in this protein have been linked to premature ovarian failure 2.
Molecular Weight:	125569
Gene ID:	1730
NCBI Accession:	NP_006720 , NP_009293
UniProt:	O60879

Application Details

Application Notes:	WB: 1:1000. IHC-P: 1:50~100. FC: 1:10~50
Restrictions:	For Research Use only

Handling

Format:	Liquid
Buffer:	Purified polyclonal antibody supplied in PBS with 0.09 % (W/V) sodium azide.
Preservative:	Sodium azide
Precaution of Use:	This product contains Sodium azide: a POISONOUS AND HAZARDOUS SUBSTANCE which should be handled by trained staff only.
Storage:	4 °C, -20 °C
Storage Comment:	Maintain refrigerated at 2-8 °C for up to 6 months. For long term storage store at -20 °C in small aliquots to prevent freeze-thaw cycles.
Expiry Date:	6 months



Flow Cytometry

Image 1. DIH2 Antibody (Center) 9407c flow cytometric analysis of CEM cells (right histogram) compared to a negative control cell (left histogram).FITC-conjugated goat-anti-rabbit secondary antibodies were used for the analysis.

Western Blotting

Image 2. Western blot analysis of DIH2 Antibody (Center) 9407c in 293, MDA-M cell line lysates (35 µg/lane). DIH2 (arrow) was detected using the purified Pab.

Immunohistochemistry (Paraffin-embedded Sections)

Image 3. Formalin-fixed and paraffin-embedded human testis tissue reacted with DIH2 Antibody (Center), which was peroxidase-conjugated to the secondary antibody, followed by DAB staining. This data demonstrates the use of this antibody for immunohistochemistry, clinical relevance has not been evaluated.