

Datasheet for ABIN653369
anti-ABHD11 antibody (AA 176-205)[Go to Product page](#)

2 Images

Overview

Quantity:	400 µL
Target:	ABHD11
Binding Specificity:	AA 176-205
Reactivity:	Human
Host:	Rabbit
Clonality:	Polyclonal
Conjugate:	This ABHD11 antibody is un-conjugated
Application:	Western Blotting (WB), Flow Cytometry (FACS)

Product Details

Immunogen:	This ABHDB antibody is generated from rabbits immunized with a KLH conjugated synthetic peptide between 176-205 amino acids from the Central region of human ABHDB.
Clone:	RB24708
Isotype:	Ig Fraction
Purification:	This antibody is purified through a protein A column, followed by peptide affinity purification.

Target Details

Target:	ABHD11
Alternative Name:	ABHDB (ABHD11 Products)
Background:	ABHDB encodes a protein containing an alpha/beta hydrolase fold domain. This protein is

Target Details

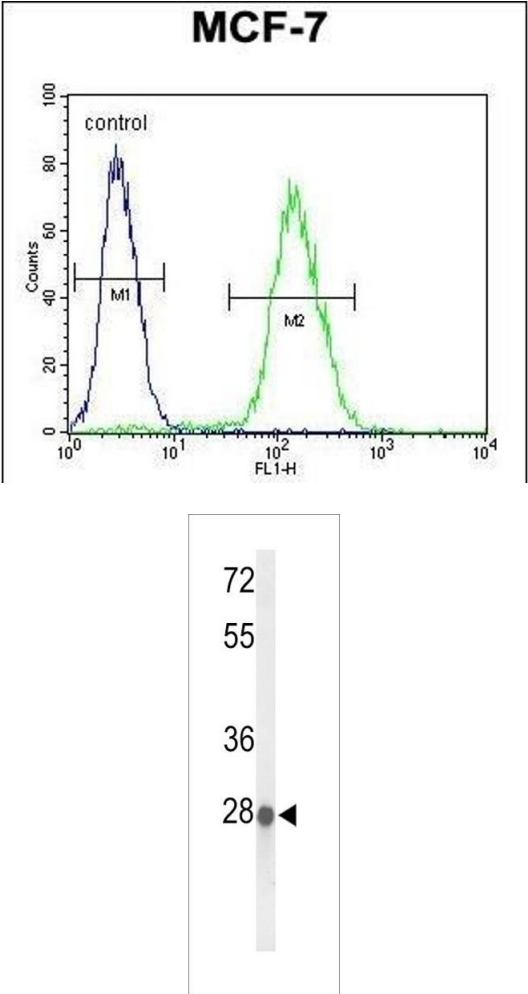
	deleted in Williams syndrome, a multisystem developmental disorder caused by the deletion of contiguous genes at 7q11.23.
Molecular Weight:	34690
Gene ID:	83451
NCBI Accession:	NP_001138836 , NP_683710 , NP_683711
UniProt:	Q8NFV4

Application Details

Application Notes:	WB: 1:1000. FC: 1:10~50
Restrictions:	For Research Use only

Handling

Format:	Liquid
Buffer:	Purified polyclonal antibody supplied in PBS with 0.09 % (W/V) sodium azide.
Preservative:	Sodium azide
Precaution of Use:	This product contains Sodium azide: a POISONOUS AND HAZARDOUS SUBSTANCE which should be handled by trained staff only.
Storage:	4 °C,-20 °C
Storage Comment:	Maintain refrigerated at 2-8 °C for up to 6 months. For long term storage store at -20 °C in small aliquots to prevent freeze-thaw cycles.
Expiry Date:	6 months



Flow Cytometry

Image 1. ABHDB Antibody (Center) (ABIN653369 and ABIN2842841) flow cytometric analysis of MCF-7 cells (right histogram) compared to a negative control cell (left histogram).FITC-conjugated goat-anti-rabbit secondary antibodies were used for the analysis.

Western Blotting

Image 2. Western blot analysis of ABHDB Antibody (Center) (ABIN653369 and ABIN2842841) in MCF-7 cell line lysates (35 µg/lane). ABHDB (arrow) was detected using the purified Pab.