

Datasheet for ABIN653383

anti-STRA6 antibody (C-Term)**3** Images[Go to Product page](#)

Overview

Quantity:	400 µL
Target:	STRA6
Binding Specificity:	AA 586-614, C-Term
Reactivity:	Human, Mouse
Host:	Rabbit
Clonality:	Polyclonal
Conjugate:	This STRA6 antibody is un-conjugated
Application:	Western Blotting (WB), Immunohistochemistry (Paraffin-embedded Sections) (IHC (p))

Product Details

Immunogen:	This STRA6 antibody is generated from rabbits immunized with a KLH conjugated synthetic peptide between 586-614 AA from the C-terminal region of human STRA6.
Clone:	RB25359
Isotype:	Ig Fraction
Purification:	This antibody is purified through a protein A column, followed by peptide affinity purification.

Target Details

Target:	STRA6
Alternative Name:	STRA6 (STRA6 Products)
Background:	Function

Target Details

May act as a high-affinity cell-surface receptor for the complex retinol-retinol binding protein (RBP/RBP4). Acts by removing retinol from RBP/RBP4 and transports it across the plasma membrane, where it can be metabolized. This mechanism does not depend on endocytosis. Binds to RBP/RBP4 with high affinity. Increases cellular retinol uptake from the retinol-RBP complex (By similarity).

Cellular Location

Cell membrane, Multi-pass membrane protein (Potential)

Tissue Location

Broad expression. In adult eye expressed in sclera, retina, retinal pigment epithelium, and trabecular meshwork but not in choroid and iris

Synonyms: Stimulated by retinoic acid gene 6 protein homolog, UNQ3126/PRO10282/PRO19578, PP14296, STRA6

Molecular Weight: 73503 Da

Gene ID: 64220

UniProt: [Q9BX79](#)

Pathways: [Feeding Behaviour](#)

Application Details

Application Notes: Suggested dilutions:
WB = 1:1000, IHC (p) = 1:50-100
Optimal working dilution should be determined by the investigator.

Restrictions: For Research Use only

Handling

Format: Liquid

Concentration: 0.5 mg/mL

Buffer: PBS with 0.09 % (W/V) sodium azide

Preservative: Sodium azide

Precaution of Use: WARNING: Reagents contain sodium azide. Sodium azide is very toxic if ingested or inhaled.

Handling

Avoid contact with skin, eyes, or clothing. Wear eye or face protection when handling. If skin or eye contact occurs, wash with copious amounts of water. If ingested or inhaled, contact a physician immediately. Sodium azide yields toxic hydrazoic acid under acidic conditions. Dilute azide-containing compounds in running water before discarding to avoid accumulation of potentially explosive deposits in lead or copper plumbing.

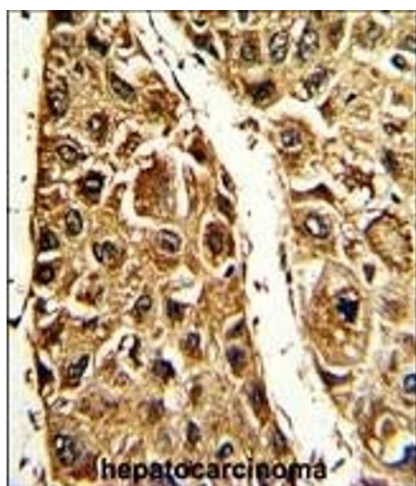
Handling Advice: Avoid freeze-thaw cycles.

Storage: 4 °C/-20 °C

Storage Comment: Maintain refrigerated at 2-8 °C for up to 6 months. For long term storage store at -20 °C in small aliquots.

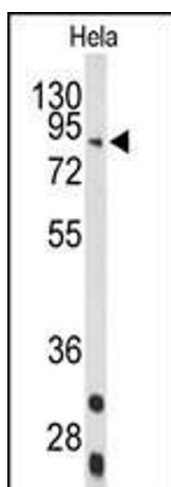
Expiry Date: 6 months

Images



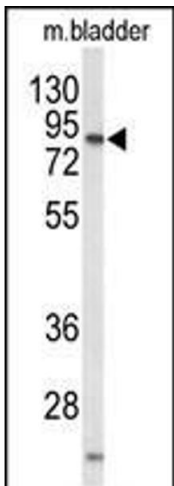
Immunohistochemistry (Paraffin-embedded Sections)

Image 1. Formalin-fixed and paraffin-embedded human hepatocarcinoma with STRA6 Antibody (C-term), which was peroxidase-conjugated to the secondary antibody, followed by DAB staining. This data demonstrates the use of this antibody for immunohistochemistry, clinical relevance has not been evaluated.



Western Blotting

Image 2. Western blot analysis of STRA6 Antibody (C-term) in Hela cell line lysates (35 µg/lane). UBAC1 (arrow) was detected using the purified Pab,



Western Blotting

Image 3. Western blot analysis of STRA6 Antibody (C-term) in mouse bladder tissue lysates (35 µg/lane). STRA6 (arrow) was detected using the purified Pab.