

Datasheet for ABIN653387
anti-SLC1A5 antibody (AA 186-214)[Go to Product page](#)

1 Image

Overview

Quantity:	400 µL
Target:	SLC1A5
Binding Specificity:	AA 186-214
Reactivity:	Human
Host:	Rabbit
Clonality:	Polyclonal
Conjugate:	This SLC1A5 antibody is un-conjugated
Application:	Western Blotting (WB)

Product Details

Immunogen:	This SLC1A5 antibody is generated from rabbits immunized with a KLH conjugated synthetic peptide between 186-214 amino acids from the Central region of human SLC1A5.
Clone:	RB18498
Isotype:	Ig Fraction
Purification:	This antibody is prepared by Saturated Ammonium Sulfate (SAS) precipitation followed by dialysis against PBS.

Target Details

Target:	SLC1A5
Alternative Name:	SLC1A5 (SLC1A5 Products)

Target Details

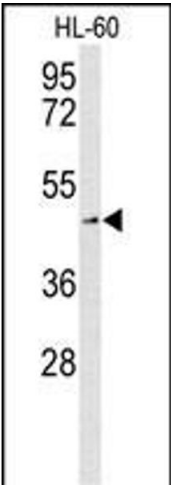
Background:	SLC1A5 (Solute carrier family 1 (neutral amino acid transporter), member 5) is a member of the Na(+)-dependent amino acid transporter superfamily. It has a broad substrate specificity, a preference for zwitterionic amino acids, and a sodium-dependence. It accepts as substrates all neutral amino acids, including glutamine, asparagine, and branched-chain and aromatic amino acids, and excludes methylated amino acids, anionic amino acids, and cationic amino acids. It acts as a cell surface receptor for feline endogenous virus RD114, baboon M7 endogenous virus and type D simian retroviruses.
Molecular Weight:	56598
Gene ID:	6510
NCBI Accession:	NP_001138616 , NP_001138617 , NP_005619
UniProt:	Q15758
Pathways:	Dicarboxylic Acid Transport , Warburg Effect

Application Details

Application Notes:	WB: 1:1000
Restrictions:	For Research Use only

Handling

Format:	Liquid
Buffer:	Purified polyclonal antibody supplied in PBS with 0.09 % (W/V) sodium azide.
Preservative:	Sodium azide
Precaution of Use:	This product contains Sodium azide: a POISONOUS AND HAZARDOUS SUBSTANCE which should be handled by trained staff only.
Storage:	4 °C,-20 °C
Storage Comment:	Maintain refrigerated at 2-8 °C for up to 6 months. For long term storage store at -20 °C in small aliquots to prevent freeze-thaw cycles.
Expiry Date:	6 months



Western Blotting

Image 1. Western blot analysis of SLC1A5 Antibody (Center) (ABIN653387 and ABIN2842850) in HL-60 cell line lysates (35 µg/lane). SLC1A5 (arrow) was detected using the purified Pab.