

Datasheet for ABIN653392
anti-MAFA antibody (AA 203-231)[Go to Product page](#)

1 Image

Overview

Quantity:	400 µL
Target:	MAFA
Binding Specificity:	AA 203-231
Reactivity:	Human, Mouse
Host:	Rabbit
Clonality:	Polyclonal
Conjugate:	This MAFA antibody is un-conjugated
Application:	Western Blotting (WB)

Product Details

Immunogen:	This MAFA antibody is generated from rabbits immunized with a KLH conjugated synthetic peptide between 203-231 amino acids from the Central region of human MAFA.
Clone:	RB18606
Isotype:	Ig Fraction
Purification:	This antibody is prepared by Saturated Ammonium Sulfate (SAS) precipitation followed by dialysis against PBS.

Target Details

Target:	MAFA
Alternative Name:	MAFA (MAFA Products)

Target Details

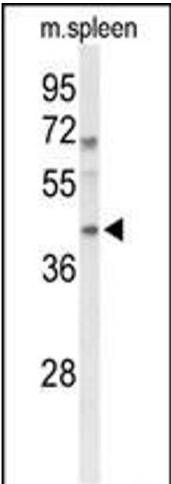
Background:	MAFA is a transcription factor that binds RIPE3b, a conserved enhancer element that regulates pancreatic beta cell-specific expression of the insulin gene.
Molecular Weight:	36982
Gene ID:	389692
NCBI Accession:	NP_963883
UniProt:	Q8NHW3
Pathways:	Hormone Transport

Application Details

Application Notes:	WB: 1:1000
Restrictions:	For Research Use only

Handling

Format:	Liquid
Buffer:	Purified polyclonal antibody supplied in PBS with 0.09 % (W/V) sodium azide.
Preservative:	Sodium azide
Precaution of Use:	This product contains Sodium azide: a POISONOUS AND HAZARDOUS SUBSTANCE which should be handled by trained staff only.
Storage:	4 °C,-20 °C
Storage Comment:	Maintain refrigerated at 2-8 °C for up to 6 months. For long term storage store at -20 °C in small aliquots to prevent freeze-thaw cycles.
Expiry Date:	6 months



Western Blotting

Image 1. Western blot analysis of FA Antibody (Center) (ABIN653392 and ABIN2842853) in mouse spleen tissue lysates (35 µg/lane). FA (arrow) was detected using the purified Pab.