

Datasheet for ABIN653393
anti-ELF3 antibody (C-Term)[Go to Product page](#)

1 Image

Overview

Quantity:	400 µL
Target:	ELF3
Binding Specificity:	AA 322-349, C-Term
Reactivity:	Human
Host:	Rabbit
Clonality:	Polyclonal
Conjugate:	This ELF3 antibody is un-conjugated
Application:	Western Blotting (WB)

Product Details

Immunogen:	This ELF3 antibody is generated from rabbits immunized with a KLH conjugated synthetic peptide between 322-349 amino acids from the C-terminal region of human ELF3.
Clone:	RB18629
Isotype:	Ig Fraction
Predicted Reactivity:	B, M, Rat
Purification:	This antibody is purified through a protein A column, followed by peptide affinity purification.

Target Details

Target:	ELF3
Alternative Name:	ELF3 (ELF3 Products)

Target Details

Molecular Weight:	41454
Gene ID:	1999
NCBI Accession:	NP_001107781 , NP_004424
UniProt:	P78545

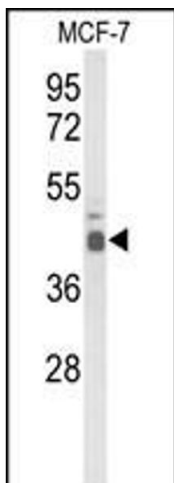
Application Details

Application Notes:	WB: 1:1000
Restrictions:	For Research Use only

Handling

Format:	Liquid
Buffer:	Purified polyclonal antibody supplied in PBS with 0.09 % (W/V) sodium azide.
Preservative:	Sodium azide
Precaution of Use:	This product contains Sodium azide: a POISONOUS AND HAZARDOUS SUBSTANCE which should be handled by trained staff only.
Storage:	4 °C, -20 °C
Storage Comment:	Maintain refrigerated at 2-8 °C for up to 6 months. For long term storage store at -20 °C in small aliquots to prevent freeze-thaw cycles.
Expiry Date:	6 months

Images



Western Blotting

Image 1. Western blot analysis of ELF3 Antibody (C-term) (ABIN653393 and ABIN2842854) in MCF-7 cell line lysates (35 µg/lane). ELF3 (arrow) was detected using the purified Pab.