



[Go to Product page](#)

Datasheet for ABIN653418
anti-DBC1 antibody (N-Term)

1 Image

Overview

Quantity:	400 µL
Target:	DBC1 (BRINP1)
Binding Specificity:	AA 85-111, N-Term
Reactivity:	Human, Mouse
Host:	Rabbit
Clonality:	Polyclonal
Conjugate:	This DBC1 antibody is un-conjugated
Application:	Western Blotting (WB)

Product Details

Immunogen:	This DBC1 antibody is generated from rabbits immunized with a KLH conjugated synthetic peptide between 85-111 amino acids from the N-terminal region of human DBC1.
Clone:	RB22619
Isotype:	Ig Fraction
Predicted Reactivity:	B, C, Rat
Purification:	This antibody is purified through a protein A column, followed by peptide affinity purification.

Target Details

Target:	DBC1 (BRINP1)
Alternative Name:	DBC1 (BRINP1 Products)

Target Details

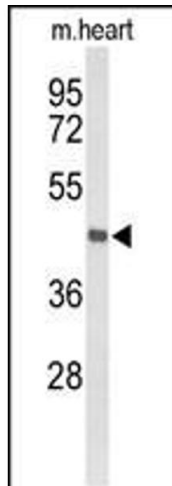
Background:	DBC1 is located within a chromosomal region that shows loss of heterozygosity in some bladder cancers. It contains a 5' CpG island that may be a frequent target of hypermethylation, and it may undergo hypermethylation-based silencing in some bladder cancers.
Molecular Weight:	88760
Gene ID:	1620
NCBI Accession:	NP_055433
UniProt:	O60477

Application Details

Application Notes:	WB: 1:1000
Restrictions:	For Research Use only

Handling

Format:	Liquid
Buffer:	Purified polyclonal antibody supplied in PBS with 0.09 % (W/V) sodium azide.
Preservative:	Sodium azide
Precaution of Use:	This product contains Sodium azide: a POISONOUS AND HAZARDOUS SUBSTANCE which should be handled by trained staff only.
Storage:	4 °C, -20 °C
Storage Comment:	Maintain refrigerated at 2-8 °C for up to 6 months. For long term storage store at -20 °C in small aliquots to prevent freeze-thaw cycles.
Expiry Date:	6 months



Western Blotting

Image 1. Western blot analysis of DBC1 Antibody (N-term) (ABIN653418 and ABIN2842866) in mouse heart tissue lysates (35 µg/lane). DBC1 (arrow) was detected using the purified Pab.