



[Go to Product page](#)

Datasheet for ABIN653426

anti-IL-26 antibody (AA 88-115)

1 Image

Overview

Quantity:	400 µL
Target:	IL-26 (IL26)
Binding Specificity:	AA 88-115
Reactivity:	Human
Host:	Rabbit
Clonality:	Polyclonal
Conjugate:	This IL-26 antibody is un-conjugated
Application:	Western Blotting (WB)

Product Details

Immunogen:	This IL26 antibody is generated from rabbits immunized with a KLH conjugated synthetic peptide between 88-115 amino acids from the Central region of human IL26.
Clone:	RB23033
Isotype:	IgG
Purification:	This antibody is purified through a protein A column, followed by peptide affinity purification.

Target Details

Target:	IL-26 (IL26)
Alternative Name:	IL26 (IL26 Products)
Background:	IL26 is a member of the IL10 family of cytokines. It is a secreted protein and may function as a

Target Details

homodimer. This protein is thought to contribute to the transformed phenotype of T cells after infection by herpesvirus samimiri.

Molecular Weight: 19843

Gene ID: 55801

NCBI Accession: [NP_060872](#)

UniProt: [Q9NPH9](#)

Application Details

Application Notes: WB: 1:1000

Restrictions: For Research Use only

Handling

Format: Liquid

Buffer: Purified polyclonal antibody supplied in PBS with 0.09 % (W/V) sodium azide.

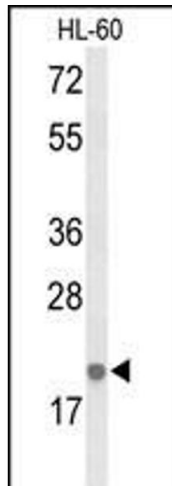
Preservative: Sodium azide

Precaution of Use: This product contains Sodium azide: a POISONOUS AND HAZARDOUS SUBSTANCE which should be handled by trained staff only.

Storage: 4 °C,-20 °C

Storage Comment: Maintain refrigerated at 2-8 °C for up to 6 months. For long term storage store at -20 °C in small aliquots to prevent freeze-thaw cycles.

Expiry Date: 6 months



Western Blotting

Image 1. Western blot analysis of IL26 Antibody (Center) (ABIN653426 and ABIN2842870) in HL-60 cell line lysates (35 μ g/lane). IL26 (arrow) was detected using the purified Pab.