

Datasheet for ABIN653428
anti-BRS3 antibody (AA 239-268)[Go to Product page](#)

1 Image

Overview

Quantity:	400 µL
Target:	BRS3
Binding Specificity:	AA 239-268
Reactivity:	Human, Mouse
Host:	Rabbit
Clonality:	Polyclonal
Conjugate:	This BRS3 antibody is un-conjugated
Application:	Western Blotting (WB)

Product Details

Immunogen:	This BRS3 antibody is generated from rabbits immunized with a KLH conjugated synthetic peptide between 239-268 amino acids from the Central region of human BRS3.
Clone:	RB23054
Isotype:	Ig Fraction
Predicted Reactivity:	Rat
Purification:	This antibody is purified through a protein A column, followed by peptide affinity purification.

Target Details

Target:	BRS3
Alternative Name:	BRS3 (BRS3 Products)

Target Details

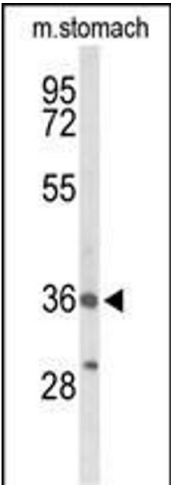
Background:	Mammalian bombesin-like peptides (see MIM 137260) are widely distributed in the central nervous system as well as in the gastrointestinal tract, where they modulate smooth-muscle contraction, exocrine and endocrine processes, metabolism, and behavior. They bind to G protein-coupled receptors on the cell surface to elicit their effects. Bombesin-like peptide receptors include gastrin-releasing peptide receptor (MIM 305670), neuromedin B receptor (MIM 162341), and bombesin-like receptor-3 (BRS3) (Ohki-Hamazaki et al., 1997).
Molecular Weight:	44411
Gene ID:	680
NCBI Accession:	NP_001718
UniProt:	P32247
Pathways:	Feeding Behaviour

Application Details

Application Notes:	WB: 1:1000
Restrictions:	For Research Use only

Handling

Format:	Liquid
Buffer:	Purified polyclonal antibody supplied in PBS with 0.09 % (W/V) sodium azide.
Preservative:	Sodium azide
Precaution of Use:	This product contains Sodium azide: a POISONOUS AND HAZARDOUS SUBSTANCE which should be handled by trained staff only.
Storage:	4 °C,-20 °C
Storage Comment:	Maintain refrigerated at 2-8 °C for up to 6 months. For long term storage store at -20 °C in small aliquots to prevent freeze-thaw cycles.
Expiry Date:	6 months



Western Blotting

Image 1. Western blot analysis of BRS3 Antibody (Center) (ABIN653428 and ABIN2842872) in mouse stomach tissue lysates (35 µg/lane). BRS3 (arrow) was detected using the purified Pab.