



[Go to Product page](#)

Datasheet for ABIN653430  
**anti-BTBD10 antibody (AA 191-218)**

1 Image

Overview

Quantity:	400 µL
Target:	BTBD10
Binding Specificity:	AA 191-218
Reactivity:	Human
Host:	Rabbit
Clonality:	Polyclonal
Conjugate:	This BTBD10 antibody is un-conjugated
Application:	Western Blotting (WB)

Product Details

Immunogen:	This BTBD10 antibody is generated from rabbits immunized with a KLH conjugated synthetic peptide between 191-218 amino acids from the Central region of human BTBD10.
Clone:	RB23160
Isotype:	Ig Fraction
Predicted Reactivity:	M
Purification:	This antibody is purified through a protein A column, followed by peptide affinity purification.

Target Details

Target:	BTBD10
Alternative Name:	BTBD10 ( <a href="#">BTBD10 Products</a> )

## Target Details

---

Background: BTBD10 appears to behave as a suppressor of cell death, which includes neuronal cell death related to amyotrophic lateral sclerosis. It may also act as an enhancer of cell growth via its positive regulation of Akt phosphorylation.

Gene ID: 84280

NCBI Accession: [NP\\_115696](#)

UniProt: [Q9BSF8](#)

## Application Details

---

Application Notes: WB: 1:1000

Restrictions: For Research Use only

## Handling

---

Format: Liquid

Buffer: Purified polyclonal antibody supplied in PBS with 0.09 % (W/V) sodium azide.

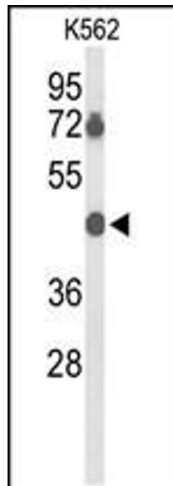
Preservative: Sodium azide

Precaution of Use: This product contains Sodium azide: a POISONOUS AND HAZARDOUS SUBSTANCE which should be handled by trained staff only.

Storage: 4 °C,-20 °C

Storage Comment: Maintain refrigerated at 2-8 °C for up to 6 months. For long term storage store at -20 °C in small aliquots to prevent freeze-thaw cycles.

Expiry Date: 6 months



### Western Blotting

**Image 1.** Western blot analysis of BTBD10 Antibody (Center) (ABIN653430 and ABIN2842874) in K562 cell line lysates (35 µg/lane). BTBD10 (arrow) was detected using the purified Pab.