

Datasheet for ABIN653431
anti-CEBPA antibody (C-Term)



[Go to Product page](#)

2 Images

Overview

Quantity:	400 µL
Target:	CEBPA
Binding Specificity:	AA 304-330, C-Term
Reactivity:	Human, Mouse
Host:	Rabbit
Clonality:	Polyclonal
Conjugate:	This CEBPA antibody is un-conjugated
Application:	Western Blotting (WB), Flow Cytometry (FACS)

Product Details

Immunogen:	This CEBPA antibody is generated from rabbits immunized with a KLH conjugated synthetic peptide between 304-330 amino acids from the C-terminal region of human CEBPA.
Clone:	RB23215
Isotype:	Ig Fraction
Predicted Reactivity:	B, Rat
Purification:	This antibody is purified through a protein A column, followed by peptide affinity purification.

Target Details

Target:	CEBPA
Alternative Name:	CEBPA (CEBPA Products)

Target Details

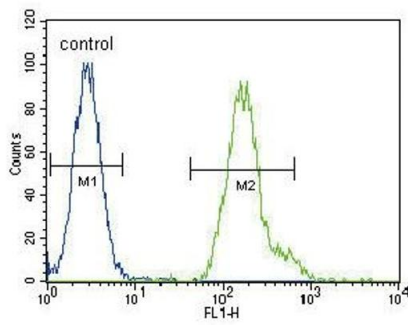
Background:	CEBPA is a bZIP transcription factor which can bind as a homodimer to certain promoters and enhancers. It can also form heterodimers with the related proteins CEBP-beta and CEBP-gamma. This protein has been shown to bind to the promoter and modulate the expression of the gene encoding leptin, a protein that plays an important role in body weight homeostasis. Also, the protein can interact with CDK2 and CDK4, thereby inhibiting these kinases and causing growth arrest in cultured cells.
Molecular Weight:	37561
Gene ID:	1050
NCBI Accession:	NP_004355
UniProt:	P49715
Pathways:	Brown Fat Cell Differentiation , Positive Regulation of fat Cell Differentiation

Application Details

Application Notes:	WB: 1:1000. FC: 1:10~50
Restrictions:	For Research Use only

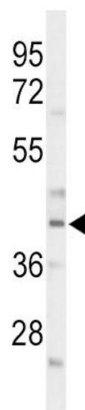
Handling

Format:	Liquid
Buffer:	Purified polyclonal antibody supplied in PBS with 0.09 % (W/V) sodium azide.
Preservative:	Sodium azide
Precaution of Use:	This product contains Sodium azide: a POISONOUS AND HAZARDOUS SUBSTANCE which should be handled by trained staff only.
Storage:	4 °C,-20 °C
Storage Comment:	Maintain refrigerated at 2-8 °C for up to 6 months. For long term storage store at -20 °C in small aliquots to prevent freeze-thaw cycles.
Expiry Date:	6 months



Flow Cytometry

Image 1. CEB Antibody (C-term) (ABIN653431 and ABIN2842875) flow cytometric analysis of Hela cells (right histogram) compared to a negative control cell (left histogram). FITC-conjugated goat-anti-rabbit secondary antibodies were used for the analysis.



Western Blotting

Image 2. Western blot analysis of CEB Antibody (C-term) (ABIN653431 and ABIN2842875) in mouse liver tissue lysates (35 µg/lane). CEB (arrow) was detected using the purified b.