

Datasheet for ABIN653432
anti-ELL antibody (C-Term)[Go to Product page](#)

1 Image

Overview

Quantity:	400 µL
Target:	ELL
Binding Specificity:	AA 516-545, C-Term
Reactivity:	Human, Mouse
Host:	Rabbit
Clonality:	Polyclonal
Conjugate:	This ELL antibody is un-conjugated
Application:	Western Blotting (WB)

Product Details

Immunogen:	This ELL antibody is generated from rabbits immunized with a KLH conjugated synthetic peptide between 516-545 amino acids from the C-terminal region of human ELL.
Clone:	RB23401
Isotype:	Ig Fraction
Purification:	This antibody is purified through a protein A column, followed by peptide affinity purification.

Target Details

Target:	ELL
Alternative Name:	ELL (ELL Products)
Background:	Elongation factor that can increase the catalytic rate of RNA polymerase II transcription by

Target Details

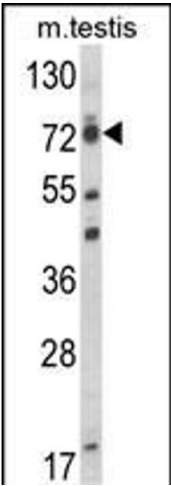
	suppressing transient pausing by the polymerase at multiple sites along the DNA.
Molecular Weight:	68265
Gene ID:	8178
NCBI Accession:	NP_006523
UniProt:	P55199

Application Details

Application Notes:	WB: 1:1000
Restrictions:	For Research Use only

Handling

Format:	Liquid
Buffer:	Purified polyclonal antibody supplied in PBS with 0.09 % (W/V) sodium azide.
Preservative:	Sodium azide
Precaution of Use:	This product contains Sodium azide: a POISONOUS AND HAZARDOUS SUBSTANCE which should be handled by trained staff only.
Storage:	4 °C,-20 °C
Storage Comment:	Maintain refrigerated at 2-8 °C for up to 6 months. For long term storage store at -20 °C in small aliquots to prevent freeze-thaw cycles.
Expiry Date:	6 months



Western Blotting

Image 1. Western blot analysis of ELL Antibody (C-term) (ABIN653432 and ABIN2842876) in mouse testis tissue lysates (35 µg/lane). ELL (arrow) was detected using the purified Pab.