

Datasheet for ABIN653444
anti-IRX2 antibody (AA 180-208)[Go to Product page](#)

1 Image

Overview

| | |
|----------------------|-------------------------------------|
| Quantity: | 400 µL |
| Target: | IRX2 |
| Binding Specificity: | AA 180-208 |
| Reactivity: | Human, Mouse |
| Host: | Rabbit |
| Clonality: | Polyclonal |
| Conjugate: | This IRX2 antibody is un-conjugated |
| Application: | Western Blotting (WB) |

Product Details

| | |
|---------------|---|
| Immunogen: | This IRX2 antibody is generated from rabbits immunized with a KLH conjugated synthetic peptide between 180-208 amino acids from the Central region of human IRX2. |
| Clone: | RB23964 |
| Isotype: | Ig Fraction |
| Purification: | This antibody is purified through a protein A column, followed by peptide affinity purification. |

Target Details

| | |
|-------------------|--|
| Target: | IRX2 |
| Alternative Name: | IRX2 (IRX2 Products) |
| Background: | IRX2 is a member of the Iroquois homeobox gene family. Members of this family appear to play |

Target Details

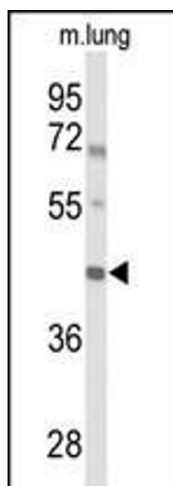
| | |
|-------------------|--|
| | multiple roles during pattern formation of vertebrate embryos. |
| Molecular Weight: | 49129 |
| Gene ID: | 153572 |
| NCBI Accession: | NP_001127694 , NP_150366 |
| UniProt: | Q9BZ11 |
| Pathways: | Tube Formation |

Application Details

| | |
|--------------------|-----------------------|
| Application Notes: | WB: 1:1000 |
| Restrictions: | For Research Use only |

Handling

| | |
|--------------------|--|
| Format: | Liquid |
| Buffer: | Purified polyclonal antibody supplied in PBS with 0.09 % (W/V) sodium azide. |
| Preservative: | Sodium azide |
| Precaution of Use: | This product contains Sodium azide: a POISONOUS AND HAZARDOUS SUBSTANCE which should be handled by trained staff only. |
| Storage: | 4 °C,-20 °C |
| Storage Comment: | Maintain refrigerated at 2-8 °C for up to 6 months. For long term storage store at -20 °C in small aliquots to prevent freeze-thaw cycles. |
| Expiry Date: | 6 months |



Western Blotting

Image 1. Western blot analysis of IRX2 Antibody (Center) (ABIN653444 and ABIN2842883) in mouse lung tissue lysates (35 µg/lane). IRX2 (arrow) was detected using the purified Pab.