

Datasheet for ABIN653446  
**anti-GEN1 antibody (N-Term)**

## 2 Images

[Go to Product page](#)

## Overview

Quantity:	400 µL
Target:	GEN1
Binding Specificity:	AA 60-89, N-Term
Reactivity:	Human, Mouse
Host:	Rabbit
Clonality:	Polyclonal
Conjugate:	This GEN1 antibody is un-conjugated
Application:	Western Blotting (WB)

## Product Details

Immunogen:	This GEN1 antibody is generated from rabbits immunized with a KLH conjugated synthetic peptide between 60-89 amino acids from the N-terminal region of human GEN1.
Clone:	RB23975
Isotype:	Ig Fraction
Purification:	This antibody is purified through a protein A column, followed by peptide affinity purification.

## Target Details

Target:	GEN1
Alternative Name:	GEN1 ( <a href="#">GEN1 Products</a> )
Background:	Endonuclease which cleaves flap structures at the junction between single-stranded DNA and

## Target Details

double-stranded DNA. Specific for 5'-overhanging flap structures in which the 5'-upstream of the flap is completely double-stranded. Prefers the blocked-flap structures similar to those occurring at replication forks, in which the 5' single-strand overhang of the flap is double-stranded (By similarity).

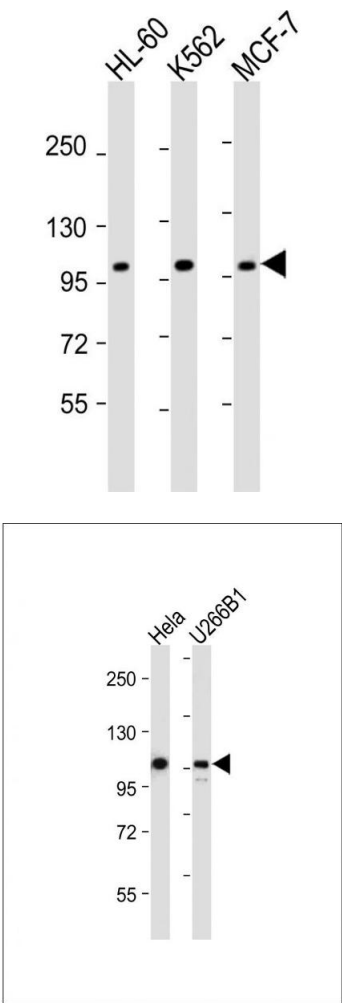
Molecular Weight:	102884
Gene ID:	348654
NCBI Accession:	<a href="#">NP_001123481</a> , <a href="#">NP_872431</a>
UniProt:	<a href="#">Q17RS7</a>
Pathways:	<a href="#">DNA Damage Repair</a>

## Application Details

Application Notes:	WB: 1:2000. WB: 1:2000
Restrictions:	For Research Use only

## Handling

Format:	Liquid
Buffer:	Purified polyclonal antibody supplied in PBS with 0.09 % (W/V) sodium azide.
Preservative:	Sodium azide
Precaution of Use:	This product contains Sodium azide: a POISONOUS AND HAZARDOUS SUBSTANCE which should be handled by trained staff only.
Storage:	4 °C,-20 °C
Storage Comment:	Maintain refrigerated at 2-8 °C for up to 6 months. For long term storage store at -20 °C in small aliquots to prevent freeze-thaw cycles.
Expiry Date:	6 months



Western Blotting

**Image 1.** All lanes : Anti-GEN1 Antibody (N-term) at 1:2000 dilution Lane 1: HL-60 whole cell lysate Lane 2: K562 whole cell lysate Lane 3: MCF-7 whole cell lysate Lysates/proteins at 20 µg per lane. Secondary Goat Anti-Rabbit IgG, (H+L), Peroxidase conjugated at 1/10000 dilution. Predicted band size : 103 kDa Blocking/Dilution buffer: 5 % NFDM/TBST.

Western Blotting

**Image 2.** All lanes : Anti-GEN1 Antibody (N-term) at 1:2000 dilution Lane 1: HeLa whole cell lysate Lane 2: U266B1 whole cell lysate Lysates/proteins at 20 µg per lane. Secondary Goat Anti-Rabbit IgG, (H+L), Peroxidase conjugated at 1/10000 dilution. Predicted band size : 103 kDa Blocking/Dilution buffer: 5 % NFDM/TBST.