

Datasheet for ABIN653447
anti-GINS1 antibody (N-Term)[Go to Product page](#)

1 Image

2 Publications

Overview

Quantity:	400 µL
Target:	GINS1
Binding Specificity:	AA 1-30, N-Term
Reactivity:	Human
Host:	Rabbit
Clonality:	Polyclonal
Conjugate:	This GINS1 antibody is un-conjugated
Application:	Western Blotting (WB)

Product Details

Immunogen:	This GINS1 antibody is generated from rabbits immunized with a KLH conjugated synthetic peptide between 1-30 amino acids from the N-terminal region of human GINS1.
Clone:	RB23977
Isotype:	Ig Fraction
Predicted Reactivity:	M
Purification:	This antibody is purified through a protein A column, followed by peptide affinity purification.

Target Details

Target:	GINS1
Alternative Name:	GINS1 (GINS1 Products)

Target Details

Background:	The yeast heterotetrameric GINS complex is made up of Sld5 (GINS4, MIM 610611), Psf1, Psf2 (GINS2, MIM 610609), and Psf3 (GINS3, MIM 610610). The formation of the GINS complex is essential for the initiation of DNA replication in yeast and Xenopus egg extracts (Ueno et al., 2005 [PubMed 16287864]).
Molecular Weight:	22988
Gene ID:	9837
NCBI Accession:	NP_066545
UniProt:	Q14691
Pathways:	DNA Replication , Synthesis of DNA

Application Details

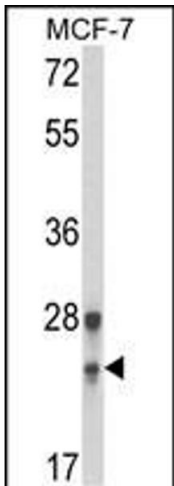
Application Notes:	WB: 1:1000
Restrictions:	For Research Use only

Handling

Format:	Liquid
Buffer:	Purified polyclonal antibody supplied in PBS with 0.09 % (W/V) sodium azide.
Preservative:	Sodium azide
Precaution of Use:	This product contains Sodium azide: a POISONOUS AND HAZARDOUS SUBSTANCE which should be handled by trained staff only.
Storage:	4 °C,-20 °C
Storage Comment:	Maintain refrigerated at 2-8 °C for up to 6 months. For long term storage store at -20 °C in small aliquots to prevent freeze-thaw cycles.
Expiry Date:	6 months

Publications

Product cited in:	Tian, Ding, You, Li, Liu, Wu, Sun, Xu: "Leiomodin-3-deficient mice display nemaline myopathy with fast-myofiber atrophy." in: Disease models & mechanisms , Vol. 8, Issue 6, pp. 635-41, (2015) (PubMed).
-------------------	--



Western Blotting

Image 1. Western blot analysis of GINS1 Antibody (N-term) (ABIN653447 and ABIN2842885) in MCF-7 cell line lysates (35 µg/lane). GINS1 (arrow) was detected using the purified Pab.