

Datasheet for ABIN653448
anti-GLDC antibody (N-Term)[Go to Product page](#)

2 Images

Overview

Quantity:	400 µL
Target:	GLDC
Binding Specificity:	AA 49-77, N-Term
Reactivity:	Human, Mouse
Host:	Rabbit
Clonality:	Polyclonal
Conjugate:	This GLDC antibody is un-conjugated
Application:	Western Blotting (WB)

Product Details

Immunogen:	This GLDC antibody is generated from rabbits immunized with a KLH conjugated synthetic peptide between 49-77 amino acids from the N-terminal region of human GLDC.
Clone:	RB23981
Isotype:	Ig Fraction
Purification:	This antibody is purified through a protein A column, followed by peptide affinity purification.

Target Details

Target:	GLDC
Alternative Name:	GLDC (GLDC Products)
Background:	Degradation of glycine is brought about by the glycine cleavage system, which is composed of

Target Details

four mitochondrial protein components: P protein (a pyridoxal phosphate-dependent glycine decarboxylase), H protein (a lipoic acid-containing protein), T protein (a tetrahydrofolate-requiring enzyme), and L protein (a lipoamide dehydrogenase). The protein is the P protein, which binds to glycine and enables the methylamine group from glycine to be transferred to the T protein. Defects in this gene are a cause of nonketotic hyperglycinemia (NKH).

Molecular Weight: 112730

Gene ID: 2731

NCBI Accession: [NP_000161](#)

UniProt: [P23378](#)

Application Details

Application Notes: WB: 1:1000. WB: 1:1000

Restrictions: For Research Use only

Handling

Format: Liquid

Buffer: Purified polyclonal antibody supplied in PBS with 0.09 % (W/V) sodium azide.

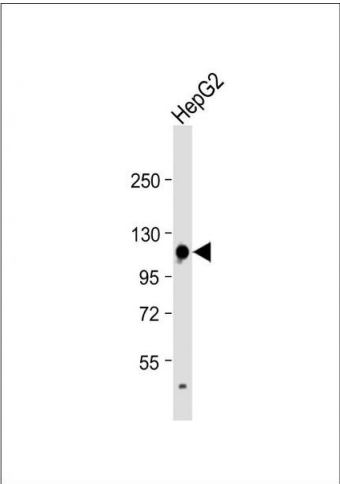
Preservative: Sodium azide

Precaution of Use: This product contains Sodium azide: a POISONOUS AND HAZARDOUS SUBSTANCE which should be handled by trained staff only.

Storage: 4 °C,-20 °C

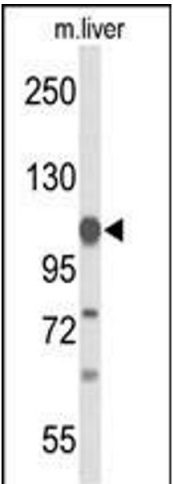
Storage Comment: Maintain refrigerated at 2-8 °C for up to 6 months. For long term storage store at -20 °C in small aliquots to prevent freeze-thaw cycles.

Expiry Date: 6 months



Western Blotting

Image 1. Anti-GLDC Antibody (N-term) at 1:1000 dilution + HepG2 whole cell lysate Lysates/proteins at 20 µg per lane. Secondary Goat Anti-Rabbit IgG, (H+L), Peroxidase conjugated at 1/10000 dilution. Predicted band size : 113 kDa Blocking/Dilution buffer: 5 % NFDM/TBST.



Western Blotting

Image 2. Western blot analysis of GLDC Antibody (N-term) (ABIN653448 and ABIN2842886) in mouse liver tissue lysates (35 µg/lane). GLDC (arrow) was detected using the purified Pab.