

Datasheet for ABIN653452

anti-G Protein-Coupled Receptor 133 antibody (AA 471-498)[Go to Product page](#)**1** Image

Overview

Quantity:	400 µL
Target:	G Protein-Coupled Receptor 133 (GPR133)
Binding Specificity:	AA 471-498
Reactivity:	Human
Host:	Rabbit
Clonality:	Polyclonal
Conjugate:	This G Protein-Coupled Receptor 133 antibody is un-conjugated
Application:	Western Blotting (WB)

Product Details

Immunogen:	This GPR133 antibody is generated from rabbits immunized with a KLH conjugated synthetic peptide between 471-498 amino acids from the Central region of human GPR133.
Clone:	RB23995
Isotype:	Ig Fraction
Purification:	This antibody is purified through a protein A column, followed by peptide affinity purification.

Target Details

Target:	G Protein-Coupled Receptor 133 (GPR133)
Alternative Name:	GPR133 (GPR133 Products)
Background:	GPR133 is an orphan receptor.

Target Details

Molecular Weight:	96530
Gene ID:	283383
NCBI Accession:	NP_942122
UniProt:	Q6QNK2

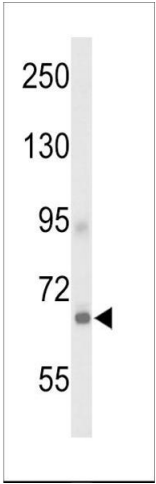
Application Details

Application Notes:	WB: 1:1000
Restrictions:	For Research Use only

Handling

Format:	Liquid
Buffer:	Purified polyclonal antibody supplied in PBS with 0.09 % (W/V) sodium azide.
Preservative:	Sodium azide
Precaution of Use:	This product contains Sodium azide: a POISONOUS AND HAZARDOUS SUBSTANCE which should be handled by trained staff only.
Storage:	4 °C, -20 °C
Storage Comment:	Maintain refrigerated at 2-8 °C for up to 6 months. For long term storage store at -20 °C in small aliquots to prevent freeze-thaw cycles.
Expiry Date:	6 months

Images



Western Blotting

Image 1. Western blot analysis of GP Antibody (Center) (ABIN653452 and ABIN2842887) in 293 cell line lysates (35 µg/lane). GP (arrow) was detected using the purified Pab.