



[Go to Product page](#)

Datasheet for ABIN653453  
**anti-GPR160 antibody (C-Term)**

1 Image

### Overview

Quantity:	400 µL
Target:	GPR160
Binding Specificity:	AA 305-332, C-Term
Reactivity:	Human, Mouse
Host:	Rabbit
Clonality:	Polyclonal
Conjugate:	This GPR160 antibody is un-conjugated
Application:	Western Blotting (WB)

### Product Details

Immunogen:	This GPR160 antibody is generated from rabbits immunized with a KLH conjugated synthetic peptide between 305-332 amino acids from the C-terminal region of human GPR160.
Clone:	RB23999
Isotype:	Ig Fraction
Purification:	This antibody is purified through a protein A column, followed by peptide affinity purification.

### Target Details

Target:	GPR160
Alternative Name:	GPR160 ( <a href="#">GPR160 Products</a> )
Background:	GPR160 is an orphan receptor.

## Target Details

Molecular Weight:	39787
Gene ID:	26996
NCBI Accession:	<a href="#">NP_055188</a>
UniProt:	<a href="#">Q9UJ42</a>

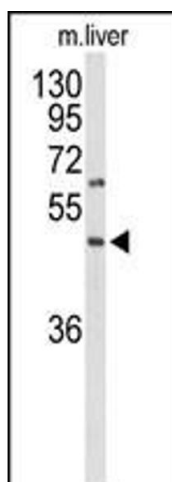
## Application Details

Application Notes:	WB: 1:1000
Restrictions:	For Research Use only

## Handling

Format:	Liquid
Buffer:	Purified polyclonal antibody supplied in PBS with 0.09 % (W/V) sodium azide.
Preservative:	Sodium azide
Precaution of Use:	This product contains Sodium azide: a POISONOUS AND HAZARDOUS SUBSTANCE which should be handled by trained staff only.
Storage:	4 °C, -20 °C
Storage Comment:	Maintain refrigerated at 2-8 °C for up to 6 months. For long term storage store at -20 °C in small aliquots to prevent freeze-thaw cycles.
Expiry Date:	6 months

## Images



### Western Blotting

**Image 1.** Western blot analysis of GP Antibody (C-term) (ABIN653453 and ABIN2842888) in mouse liver tissue lysates (35 µg/lane). GP (arrow) was detected using the purified Pab.