

Datasheet for ABIN653459
anti-GBE1 antibody (AA 527-556)

3 Images

[Go to Product page](#)

Overview

Quantity:	400 µL
Target:	GBE1
Binding Specificity:	AA 527-556
Reactivity:	Human, Mouse
Host:	Rabbit
Clonality:	Polyclonal
Conjugate:	This GBE1 antibody is un-conjugated
Application:	Western Blotting (WB), Immunofluorescence (IF)

Product Details

Immunogen:	This GBE1 antibody is generated from rabbits immunized with a KLH conjugated synthetic peptide between 527-556 amino acids from the Central region of human GBE1.
Clone:	RB24029
Isotype:	Ig Fraction
Purification:	This antibody is purified through a protein A column, followed by peptide affinity purification.

Target Details

Target:	GBE1
Alternative Name:	GBE1 (GBE1 Products)
Background:	GBE1 is a glycogen branching enzyme that catalyzes the transfer of alpha-1,4-linked glucosyl

Target Details

units from the outer end of a glycogen chain to an alpha-1,6 position on the same or a neighboring glycogen chain. Branching of the chains is essential to increase the solubility of the glycogen molecule and, consequently, in reducing the osmotic pressure within cells. Highest level of this enzyme are found in liver and muscle. Mutations in this gene are associated with glycogen storage disease IV (also known as Andersen's disease).

Molecular Weight: 80474

Gene ID: 2632

NCBI Accession: [NP_000149](#)

UniProt: [Q04446](#)

Pathways: [Cellular Glucan Metabolic Process](#)

Application Details

Application Notes: IF: 1:10~50. WB: 1:1000. WB: 1:1000

Restrictions: For Research Use only

Handling

Format: Liquid

Buffer: Purified polyclonal antibody supplied in PBS with 0.09 % (W/V) sodium azide.

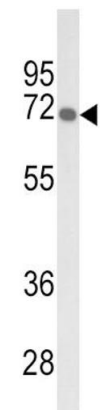
Preservative: Sodium azide

Precaution of Use: This product contains Sodium azide: a POISONOUS AND HAZARDOUS SUBSTANCE which should be handled by trained staff only.

Storage: 4 °C, -20 °C

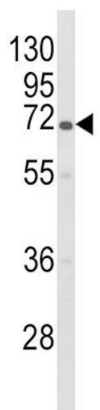
Storage Comment: Maintain refrigerated at 2-8 °C for up to 6 months. For long term storage store at -20 °C in small aliquots to prevent freeze-thaw cycles.

Expiry Date: 6 months



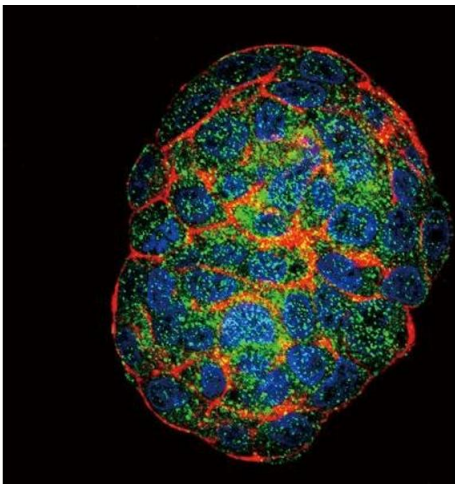
Western Blotting

Image 1. Western blot analysis of GBE1 Antibody (Center) (ABIN653459 and ABIN2842890) in mouse liver tissue lysates (35 µg/lane). GBE1 (arrow) was detected using the purified Pab.



Western Blotting

Image 2. Western blot analysis of GBE1 Antibody (Center) (ABIN653459 and ABIN2842890) in HL-60 cell line lysates (35 µg/lane). GBE1 (arrow) was detected using the purified Pab,



Immunofluorescence

Image 3. Confocal immunofluorescent analysis of GBE1 Antibody (Center) (ABIN653459 and ABIN2842890) with HepG2 cell followed by Alexa Fluor 488-conjugated goat anti-rabbit IgG (green). Actin filaments have been labeled with Alexa Fluor 555 phalloidin (red). DAPI was used to stain the cell nuclear (blue).