

Datasheet for ABIN653462
anti-HES6 antibody (N-Term)[Go to Product page](#)

1 Image

Overview

Quantity:	400 µL
Target:	HES6
Binding Specificity:	AA 6-34, N-Term
Reactivity:	Human
Host:	Rabbit
Clonality:	Polyclonal
Conjugate:	This HES6 antibody is un-conjugated
Application:	Western Blotting (WB)

Product Details

Immunogen:	This HES6 antibody is generated from rabbits immunized with a KLH conjugated synthetic peptide between 6-34 amino acids from the N-terminal region of human HES6.
Clone:	RB24048
Isotype:	Ig Fraction
Purification:	This antibody is purified through a protein A column, followed by peptide affinity purification.

Target Details

Target:	HES6
Alternative Name:	HES6 (HES6 Products)
Background:	HES6 is a member of a subfamily of basic helix-loop-helix transcription repressors that have

Target Details

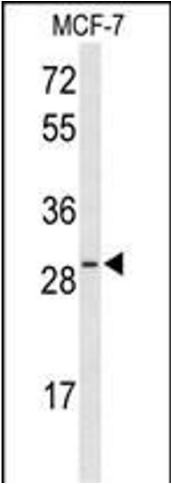
	homology to the Drosophila enhancer of split genes. The protein functions as a cofactor, interacting with other transcription factors through a tetrapeptide domain in its C-terminus.
Molecular Weight:	24129
Gene ID:	55502
NCBI Accession:	NP_001136325 , NP_001269363 , NP_061115
UniProt:	Q96HZ4

Application Details

Application Notes:	WB: 1:1000
Restrictions:	For Research Use only

Handling

Format:	Liquid
Buffer:	Purified polyclonal antibody supplied in PBS with 0.09 % (W/V) sodium azide.
Preservative:	Sodium azide
Precaution of Use:	This product contains Sodium azide: a POISONOUS AND HAZARDOUS SUBSTANCE which should be handled by trained staff only.
Storage:	4 °C,-20 °C
Storage Comment:	Maintain refrigerated at 2-8 °C for up to 6 months. For long term storage store at -20 °C in small aliquots to prevent freeze-thaw cycles.
Expiry Date:	6 months



Western Blotting

Image 1. Western blot analysis of HES6 Antibody (N-term) (ABIN653462 and ABIN2842891) in MCF-7 cell line lysates (35 µg/lane). HES6 (arrow) was detected using the purified Pab.