

Datasheet for ABIN653472
anti-AMY1A antibody (AA 195-223)

3 Images

[Go to Product page](#)

Overview

Quantity:	400 µL
Target:	AMY1A
Binding Specificity:	AA 195-223
Reactivity:	Human
Host:	Rabbit
Clonality:	Polyclonal
Conjugate:	This AMY1A antibody is un-conjugated
Application:	Western Blotting (WB), Flow Cytometry (FACS), Immunohistochemistry (Paraffin-embedded Sections) (IHC (p))

Product Details

Immunogen:	This AMY1A antibody is generated from rabbits immunized with a KLH conjugated synthetic peptide between 195-223 amino acids from the Central region of human AMY1A.
Clone:	RB24068
Isotype:	Ig Fraction
Predicted Reactivity:	Pig
Purification:	This antibody is purified through a protein A column, followed by peptide affinity purification.

Target Details

Target:	AMY1A
---------	-------

Target Details

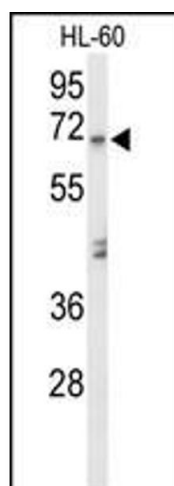
Alternative Name:	AMY1A (AMY1A Products)
Background:	Amylases are secreted proteins that hydrolyze 1,4-alpha-glucoside bonds in oligosaccharides and polysaccharides, and thus catalyze the first step in digestion of dietary starch and glycogen. The human genome has a cluster of several amylase genes that are expressed at high levels in either salivary gland or pancreas. It is an amylase isoenzyme produced by the salivary gland.
Molecular Weight:	57768
Gene ID:	278
NCBI Accession:	NP_001008219 , NP_001008220 , NP_001008222 , NP_004029
UniProt:	P04745

Application Details

Application Notes:	WB: 1:1000. IHC-P: 1:50~100. FC: 1:10~50
Restrictions:	For Research Use only

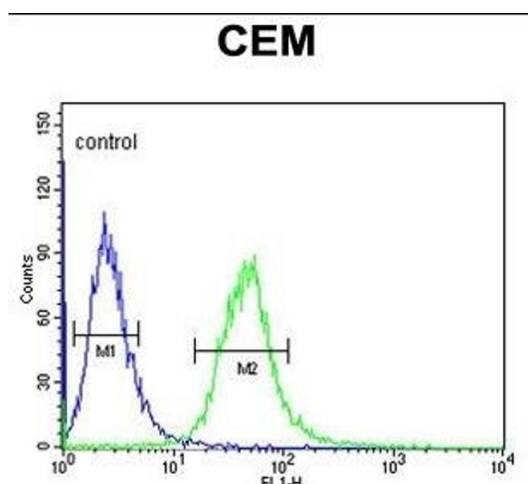
Handling

Format:	Liquid
Buffer:	Purified polyclonal antibody supplied in PBS with 0.09 % (W/V) sodium azide.
Preservative:	Sodium azide
Precaution of Use:	This product contains Sodium azide: a POISONOUS AND HAZARDOUS SUBSTANCE which should be handled by trained staff only.
Storage:	4 °C, -20 °C
Storage Comment:	Maintain refrigerated at 2-8 °C for up to 6 months. For long term storage store at -20 °C in small aliquots to prevent freeze-thaw cycles.
Expiry Date:	6 months



Western Blotting

Image 1. Western blot analysis of Y1A Antibody (Center) (ABIN653472 and ABIN2842894) in HL-60 cell line lysates (35 µg/lane). Y1A (arrow) was detected using the purified Pab.



Flow Cytometry

Image 2. Y1A Antibody (Center) (ABIN653472 and ABIN2842894) flow cytometric analysis of CEM cells (right histogram) compared to a negative control cell (left histogram). FITC-conjugated goat-anti-rabbit secondary antibodies were used for the analysis.



Immunohistochemistry (Paraffin-embedded Sections)

Image 3. Formalin-fixed and paraffin-embedded human prostate carcinoma reacted with Y1A Antibody (Center), which was peroxidase-conjugated to the secondary antibody, followed by DAB staining. This data demonstrates the use of this antibody for immunohistochemistry, clinical relevance has not been evaluated.