



Datasheet for ABIN653474
anti-EIF2A antibody (AA 437-465)



[Go to Product page](#)

3 Images

Overview

Quantity:	400 µL
Target:	EIF2A
Binding Specificity:	AA 437-465
Reactivity:	Human
Host:	Rabbit
Clonality:	Polyclonal
Conjugate:	This EIF2A antibody is un-conjugated
Application:	Western Blotting (WB), Flow Cytometry (FACS), Immunohistochemistry (Paraffin-embedded Sections) (IHC (p))

Product Details

Immunogen:	This EIF2A antibody is generated from rabbits immunized with a KLH conjugated synthetic peptide between 437-465 amino acids from the Central region of human EIF2A.
Clone:	RB24073
Isotype:	Ig Fraction
Purification:	This antibody is purified through a protein A column, followed by peptide affinity purification.

Target Details

Target:	EIF2A
Alternative Name:	EIF2A (EIF2A Products)

Target Details

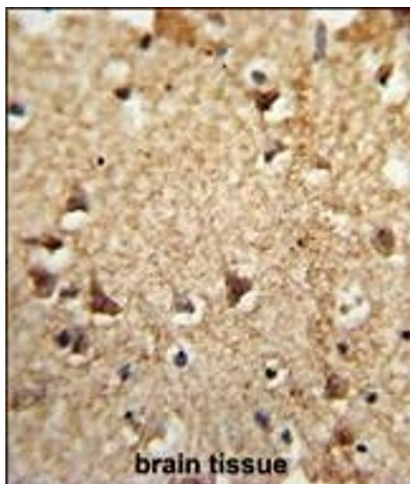
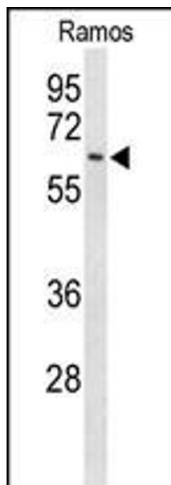
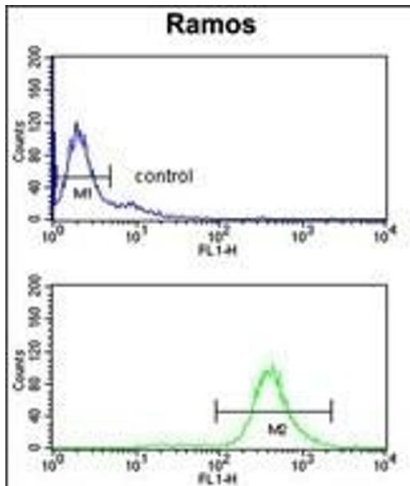
Background:	EIF2A is a 65-kD protein that catalyzes the formation of puromycin-sensitive 80S preinitiation complexes (Zoll et al., 2002 [PubMed 12133843]).
Molecular Weight:	64990
Gene ID:	83939
NCBI Accession:	NP_114414
UniProt:	Q9BY44
Pathways:	Ribonucleoprotein Complex Subunit Organization , ER-Nucleus Signaling , Hepatitis C , Methionine Biosynthetic Process , Ribosome Assembly

Application Details

Application Notes:	WB: 1:1000. IHC-P: 1:50~100. FC: 1:10~50
Restrictions:	For Research Use only

Handling

Format:	Liquid
Buffer:	Purified polyclonal antibody supplied in PBS with 0.09 % (W/V) sodium azide.
Preservative:	Sodium azide
Precaution of Use:	This product contains Sodium azide: a POISONOUS AND HAZARDOUS SUBSTANCE which should be handled by trained staff only.
Storage:	4 °C,-20 °C
Storage Comment:	Maintain refrigerated at 2-8 °C for up to 6 months. For long term storage store at -20 °C in small aliquots to prevent freeze-thaw cycles.
Expiry Date:	6 months



Flow Cytometry

Image 1. EIF2A Antibody (Center) (ABIN653474 and ABIN2842895) flow cytometry analysis of Ramos cells (bottom histogram) compared to a negative control cell (top histogram). FITC-conjugated goat-anti-rabbit secondary antibodies were used for the analysis.

Western Blotting

Image 2. Western blot analysis of EIF2A Antibody (Center) (ABIN653474 and ABIN2842895) in Ramos cell line lysates (35 µg/lane). EIF2A (arrow) was detected using the purified Pab.

Immunohistochemistry (Paraffin-embedded Sections)

Image 3. Formalin-fixed and paraffin-embedded human brain tissue reacted with EIF2A Antibody (Center), which was peroxidase-conjugated to the secondary antibody, followed by DAB staining. This data demonstrates the use of this antibody for immunohistochemistry, clinical relevance has not been evaluated.