



[Go to Product page](#)

Datasheet for ABIN653476

anti-Lactate Dehydrogenase A antibody (AA 154-182)

3 Images

1 Publication

Overview

Quantity:	400 µL
Target:	Lactate Dehydrogenase A (LDHA)
Binding Specificity:	AA 154-182
Reactivity:	Human
Host:	Rabbit
Clonality:	Polyclonal
Conjugate:	This Lactate Dehydrogenase A antibody is un-conjugated
Application:	Western Blotting (WB), Immunohistochemistry (Paraffin-embedded Sections) (IHC (p)), Flow Cytometry (FACS)

Product Details

Immunogen:	This LDHA antibody is generated from rabbits immunized with a KLH conjugated synthetic peptide between 154-182 amino acids from the Central region of human LDHA.
Clone:	RB24077
Isotype:	Ig Fraction
Predicted Reactivity:	B, Pr, Pig, Rat
Purification:	This antibody is purified through a protein A column, followed by peptide affinity purification.

Target Details

Target:	Lactate Dehydrogenase A (LDHA)
---------	--------------------------------

Target Details

Alternative Name:	LDHA (LDHA Products)
Background:	LDHA catalyzes the conversion of L-lactate and NAD to pyruvate and NADH in the final step of anaerobic glycolysis. The protein is found predominantly in muscle tissue and belongs to the lactate dehydrogenase family. Mutations in this gene have been linked to exertional myoglobinuria.
Molecular Weight:	36689
Gene ID:	3939
NCBI Accession:	NP_001128711 , NP_001158886 , NP_001158887 , NP_001158888 , NP_005557
UniProt:	P00338
Pathways:	Warburg Effect

Application Details

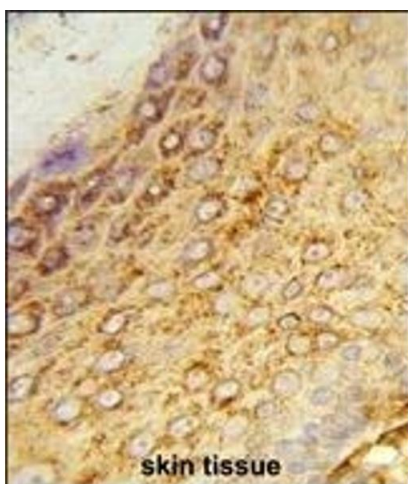
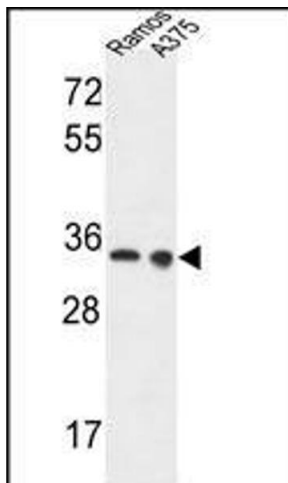
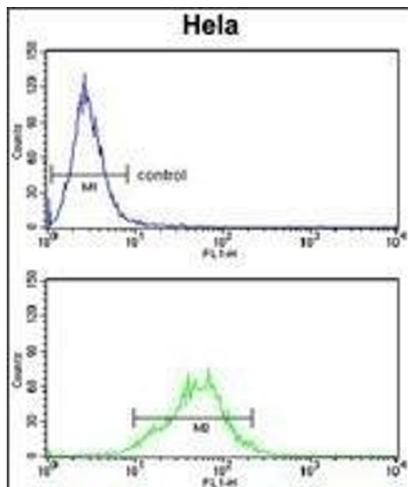
Application Notes:	WB: 1:1000. IHC-P: 1:50~100. FC: 1:10~50
Restrictions:	For Research Use only

Handling

Format:	Liquid
Buffer:	Purified polyclonal antibody supplied in PBS with 0.09 % (W/V) sodium azide.
Preservative:	Sodium azide
Precaution of Use:	This product contains Sodium azide: a POISONOUS AND HAZARDOUS SUBSTANCE which should be handled by trained staff only.
Storage:	4 °C, -20 °C
Storage Comment:	Maintain refrigerated at 2-8 °C for up to 6 months. For long term storage store at -20 °C in small aliquots to prevent freeze-thaw cycles.
Expiry Date:	6 months

Publications

Product cited in:	Tian, Ding, You, Li, Liu, Wu, Sun, Xu: "Leiomodin-3-deficient mice display nemaline myopathy with fast-myofiber atrophy." in: Disease models & mechanisms , Vol. 8, Issue 6, pp. 635-41, (2015) (PubMed).
-------------------	--



Flow Cytometry

Image 1. LDHA Antibody (Center) (ABIN653476 and ABIN2842897) flow cytometry analysis of HeLa cells (bottom histogram) compared to a negative control cell (top histogram). FITC-conjugated goat-anti-rabbit secondary antibodies were used for the analysis.

Western Blotting

Image 2. LDHA Antibody (Center) (ABIN653476 and ABIN2842897) western blot analysis in Ramos, cell line lysates (35 µg/lane). This demonstrates the LDHA antibody detected the LDHA protein (arrow).

Immunohistochemistry (Paraffin-embedded Sections)

Image 3. Formalin-fixed and paraffin-embedded human skin tissue reacted with LDHA Antibody (Center), which was peroxidase-conjugated to the secondary antibody, followed by DAB staining. This data demonstrates the use of this antibody for immunohistochemistry, clinical relevance has not been evaluated.