

Datasheet for ABIN653481

anti-CHMP4B antibody (N-Term)**3** Images**1** Publication[Go to Product page](#)

Overview

Quantity:	400 µL
Target:	CHMP4B
Binding Specificity:	AA 51-79, N-Term
Reactivity:	Human
Host:	Rabbit
Clonality:	Polyclonal
Conjugate:	This CHMP4B antibody is un-conjugated
Application:	Western Blotting (WB), Flow Cytometry (FACS), Immunohistochemistry (Paraffin-embedded Sections) (IHC (p))

Product Details

Immunogen:	This CHMP4B antibody is generated from rabbits immunized with a KLH conjugated synthetic peptide between 51-79 amino acids from the N-terminal region of human CHMP4B.
Clone:	RB24088
Isotype:	Ig Fraction
Predicted Reactivity:	C, Zf, M, X
Purification:	This antibody is purified through a protein A column, followed by peptide affinity purification.

Target Details

Target:	CHMP4B
---------	--------

Target Details

Alternative Name:	CHMP4B (CHMP4B Products)
Background:	CHMP4B is a member of the chromatin-modifying protein/charged multivesicular body protein (CHMP) protein family. The protein is part of the endosomal sorting complex required for transport (ESCRT) complex III (ESCRT-III), which functions in the sorting of endocytosed cell-surface receptors into multivesicular endosomes. The ESCRT machinery also functions in the final abscission stage of cytokinesis and in the budding of enveloped viruses such as HIV-1. The three proteins of the CHMP4 subfamily interact with programmed cell death 6 interacting protein (PDCD6IP, also known as ALIX), which also functions in the ESCRT pathway. The CHMP4 proteins assemble into membrane-attached 5-nm filaments that form circular scaffolds and promote or stabilize outward budding. These polymers are proposed to help generate the luminal vesicles of multivesicular bodies.
Molecular Weight:	24950
Gene ID:	128866
NCBI Accession:	NP_789782
UniProt:	Q9H444

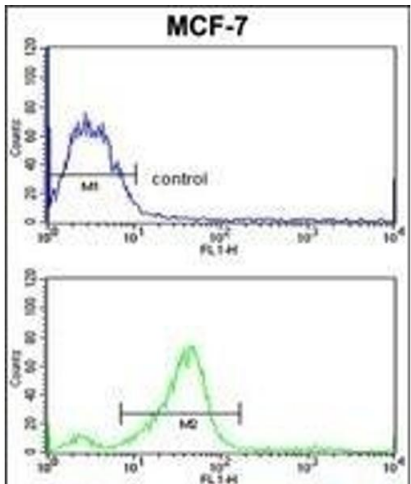
Application Details

Application Notes:	WB: 1:1000. IHC-P: 1:50~100. FC: 1:10~50
Restrictions:	For Research Use only

Handling

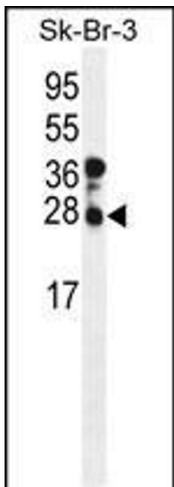
Format:	Liquid
Buffer:	Purified polyclonal antibody supplied in PBS with 0.09 % (W/V) sodium azide.
Preservative:	Sodium azide
Precaution of Use:	This product contains Sodium azide: a POISONOUS AND HAZARDOUS SUBSTANCE which should be handled by trained staff only.
Storage:	4 °C,-20 °C
Storage Comment:	Maintain refrigerated at 2-8 °C for up to 6 months. For long term storage store at -20 °C in small aliquots to prevent freeze-thaw cycles.
Expiry Date:	6 months

Product cited in: Hu, Jiang, Chen, Wei, Zhang, Zhao, Ni, Lu, Wan: "High CHMP4B expression is associated with accelerated cell proliferation and resistance to doxorubicin in hepatocellular carcinoma." in: **Tumour biology**, Vol. 36, Issue 4, pp. 2569-81, (2015) ([PubMed](#)).



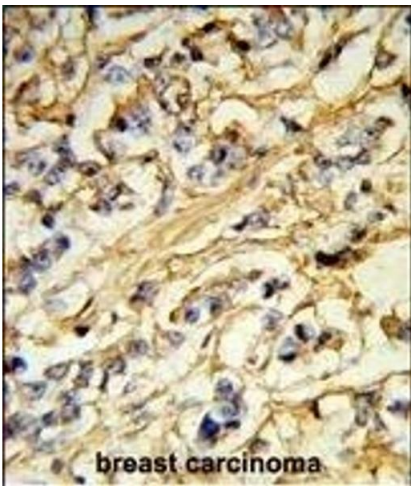
Flow Cytometry

Image 1. CHB Antibody (N-term) (ABIN653481 and ABIN2842901) flow cytometric analysis of MCF-7 cells (bottom histogram) compared to a negative control cell (top histogram).FITC-conjugated goat-anti-rabbit secondary antibodies were used for the analysis.



Western Blotting

Image 2. Western blot analysis of CHB Antibody (N-term) (ABIN653481 and ABIN2842901) in SK-BR-3 cell line lysates (35 µg/lane).CHB (arrow) was detected using the purified Pab.



Immunohistochemistry (Paraffin-embedded Sections)

Image 3. Formalin-fixed and paraffin-embedded human breast carcinoma reacted with CHB Antibody (N-term), which was peroxidase-conjugated to the secondary antibody, followed by DAB staining. This data demonstrates the use of this antibody for immunohistochemistry, clinical relevance has not been evaluated.