



[Go to Product page](#)

Datasheet for ABIN653487

anti-MAT2B antibody (N-Term)

2 Images

Overview

Quantity:	400 µL
Target:	MAT2B
Binding Specificity:	AA 80-107, N-Term
Reactivity:	Human
Host:	Rabbit
Clonality:	Polyclonal
Conjugate:	This MAT2B antibody is un-conjugated
Application:	Western Blotting (WB), Immunohistochemistry (Paraffin-embedded Sections) (IHC (p))

Product Details

Immunogen:	This MAT2B antibody is generated from rabbits immunized with a KLH conjugated synthetic peptide between 80-107 amino acids from the N-terminal region of human MAT2B.
Clone:	RB24111
Isotype:	Ig Fraction
Purification:	This antibody is purified through a protein A column, followed by peptide affinity purification.

Target Details

Target:	MAT2B
Alternative Name:	MAT2B (MAT2B Products)
Background:	MAT2B belongs to the methionine adenosyltransferase (MAT) family. MAT catalyzes the

Target Details

biosynthesis of S-adenosylmethionine from methionine and ATP. This protein is the regulatory beta subunit of MAT.

Molecular Weight: 37552

Gene ID: 27430

NCBI Accession: [NP_037415](#), [NP_877725](#)

UniProt: [Q9NZL9](#)

Pathways: [Ribonucleoside Biosynthetic Process](#), [Methionine Biosynthetic Process](#), [SARS-CoV-2 Protein Interactome](#)

Application Details

Application Notes: WB: 1:1000. IHC-P: 1:50~100

Restrictions: For Research Use only

Handling

Format: Liquid

Buffer: Purified polyclonal antibody supplied in PBS with 0.09 % (W/V) sodium azide.

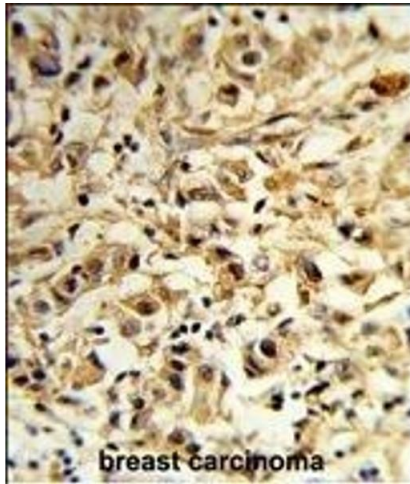
Preservative: Sodium azide

Precaution of Use: This product contains Sodium azide: a POISONOUS AND HAZARDOUS SUBSTANCE which should be handled by trained staff only.

Storage: 4 °C,-20 °C

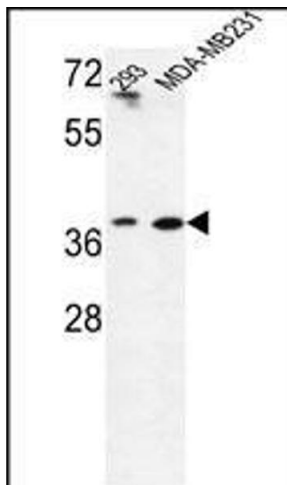
Storage Comment: Maintain refrigerated at 2-8 °C for up to 6 months. For long term storage store at -20 °C in small aliquots to prevent freeze-thaw cycles.

Expiry Date: 6 months



Immunohistochemistry (Paraffin-embedded Sections)

Image 1. Forlin-fixed and paraffin-embedded human breast carcinoma reacted with T2B Antibody (N-term), which was peroxidase-conjugated to the secondary antibody, followed by DAB staining. This data demonstrates the use of this antibody for immunohistochemistry, clinical relevance has not been evaluated.



Western Blotting

Image 2. Western blot analysis of T2B Antibody (N-term) (ABIN653487 and ABIN2842906) in 293, MDA-M cell line lysates (35 µg/lane). T2B (arrow) was detected using the purified Pab.