

Datasheet for ABIN653490  
**anti-WAC antibody (AA 284-313)**[Go to Product page](#)

## 2 Images

## Overview

Quantity:	400 µL
Target:	WAC
Binding Specificity:	AA 284-313
Reactivity:	Human
Host:	Rabbit
Clonality:	Polyclonal
Conjugate:	This WAC antibody is un-conjugated
Application:	Western Blotting (WB), Flow Cytometry (FACS)

## Product Details

Immunogen:	This WAC antibody is generated from rabbits immunized with a KLH conjugated synthetic peptide between 284-313 amino acids from the Central region of human WAC.
Clone:	RB24117
Isotype:	Ig Fraction
Purification:	This antibody is purified through a protein A column, followed by peptide affinity purification.

## Target Details

Target:	WAC
Alternative Name:	WAC ( <a href="#">WAC Products</a> )
Background:	WAC contains a WW domain, which is a protein module found in a wide range of signaling

## Target Details

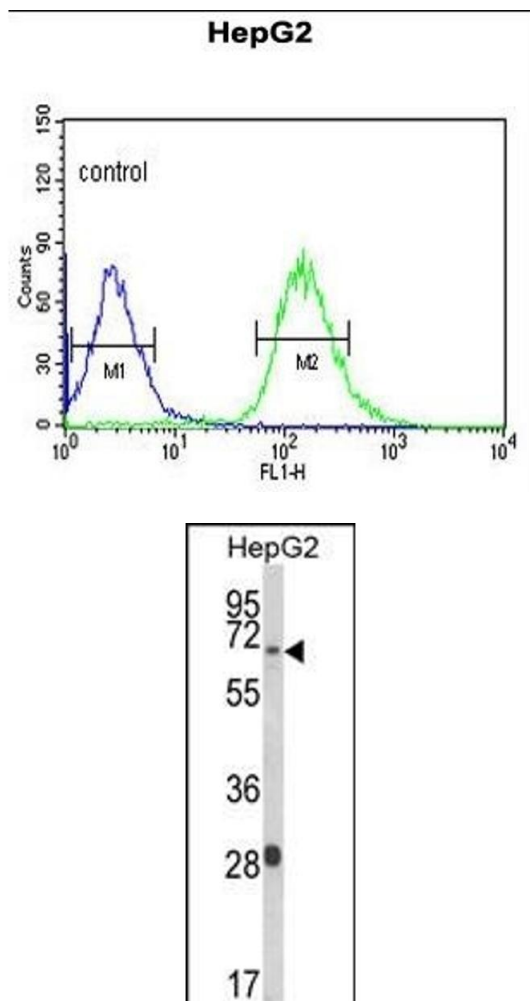
	proteins. This domain mediates protein-protein interactions and binds proteins containing short linear peptide motifs that are proline-rich or contain at least one proline. This gene product shares 94 % sequence identity with the WAC protein in mouse, however, its exact function is not known.
Molecular Weight:	70724
Gene ID:	51322
NCBI Accession:	<a href="#">NP_057712</a> , <a href="#">NP_567823</a>
UniProt:	<a href="#">Q9BTA9</a>
Pathways:	<a href="#">Chromatin Binding</a>

## Application Details

Application Notes:	WB: 1:1000. FC: 1:10~50
Restrictions:	For Research Use only

## Handling

Format:	Liquid
Buffer:	Purified polyclonal antibody supplied in PBS with 0.09 % (W/V) sodium azide.
Preservative:	Sodium azide
Precaution of Use:	This product contains Sodium azide: a POISONOUS AND HAZARDOUS SUBSTANCE which should be handled by trained staff only.
Storage:	4 °C,-20 °C
Storage Comment:	Maintain refrigerated at 2-8 °C for up to 6 months. For long term storage store at -20 °C in small aliquots to prevent freeze-thaw cycles.
Expiry Date:	6 months



### Flow Cytometry

**Image 1.** WAC Antibody (Center) (ABIN653490 and ABIN2842908) flow cytometric analysis of HepG2 cells (right histogram) compared to a negative control cell (left histogram). FITC-conjugated goat-anti-rabbit secondary antibodies were used for the analysis.

### Western Blotting

**Image 2.** Western blot analysis of WAC Antibody (Center) (ABIN653490 and ABIN2842908) in HepG2 cell line lysates (35 µg/lane). WAC (arrow) was detected using the purified Pab.