



Datasheet for ABIN653502
anti-LUC7L2 antibody (C-Term)



[Go to Product page](#)

3 Images

Overview

Quantity:	400 µL
Target:	LUC7L2
Binding Specificity:	AA 341-369, C-Term
Reactivity:	Human
Host:	Rabbit
Clonality:	Polyclonal
Conjugate:	This LUC7L2 antibody is un-conjugated
Application:	Western Blotting (WB), Flow Cytometry (FACS), Immunohistochemistry (Paraffin-embedded Sections) (IHC (p))

Product Details

Immunogen:	This LUC7L2 antibody is generated from rabbits immunized with a KLH conjugated synthetic peptide between 341-369 amino acids from the C-terminal region of human LUC7L2.
Clone:	RB24191
Isotype:	Ig Fraction
Predicted Reactivity:	M
Purification:	This antibody is purified through a protein A column, followed by peptide affinity purification.

Target Details

Target:	LUC7L2
---------	--------

Target Details

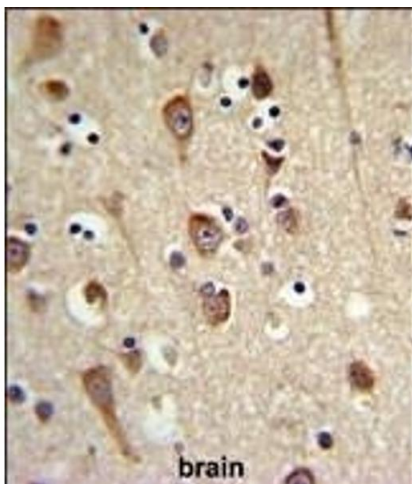
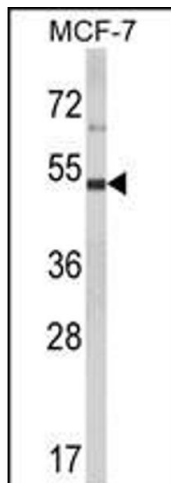
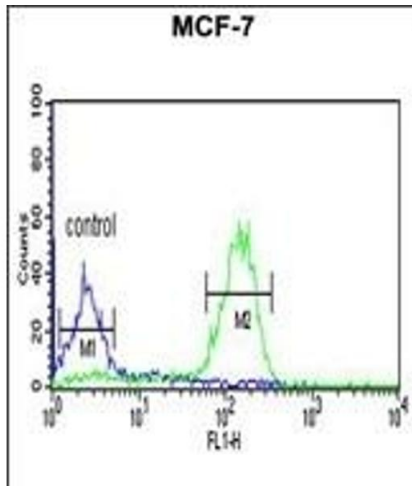
Alternative Name:	LUC7L2 (LUC7L2 Products)
Background:	LUC7L2 may bind to RNA via its Arg/Ser-rich domain.
Molecular Weight:	46514
Gene ID:	51631
NCBI Accession:	NP_001231514 , NP_001257572 , NP_057103
UniProt:	Q9Y383
Pathways:	Ribonucleoprotein Complex Subunit Organization

Application Details

Application Notes:	WB: 1:1000. IHC-P: 1:50~100. FC: 1:10~50
Restrictions:	For Research Use only

Handling

Format:	Liquid
Buffer:	Purified polyclonal antibody supplied in PBS with 0.09 % (W/V) sodium azide.
Preservative:	Sodium azide
Precaution of Use:	This product contains Sodium azide: a POISONOUS AND HAZARDOUS SUBSTANCE which should be handled by trained staff only.
Storage:	4 °C, -20 °C
Storage Comment:	Maintain refrigerated at 2-8 °C for up to 6 months. For long term storage store at -20 °C in small aliquots to prevent freeze-thaw cycles.
Expiry Date:	6 months



Flow Cytometry

Image 1. LUC7L2 Antibody (C-term) (ABIN653502 and ABIN2842911) flow cytometric analysis of MCF-7 cells (right histogram) compared to a negative control cell (left histogram). FITC-conjugated goat-anti-rabbit secondary antibodies were used for the analysis.

Western Blotting

Image 2. Western blot analysis of LUC7L2 Antibody (C-term) (ABIN653502 and ABIN2842911) in MCF-7 cell line lysates (35 µg/lane). LUC7L2 (arrow) was detected using the purified Pab.

Immunohistochemistry (Paraffin-embedded Sections)

Image 3. LUC7L2 Antibody (C-term) (ABIN653502 and ABIN2842911) IHC analysis in formalin fixed and paraffin embedded brain tissue followed by peroxidase conjugation of the secondary antibody and DAB staining. This data demonstrates the use of the LUC7L2 Antibody (C-term) for immunohistochemistry. Clinical relevance has not been evaluated.