

Datasheet for ABIN653506
anti-YIPF5 antibody (N-Term)[Go to Product page](#)

3 Images

Overview

Quantity:	400 µL
Target:	YIPF5
Binding Specificity:	AA 21-49, N-Term
Reactivity:	Human, Mouse
Host:	Rabbit
Clonality:	Polyclonal
Conjugate:	This YIPF5 antibody is un-conjugated
Application:	Western Blotting (WB), Immunohistochemistry (Paraffin-embedded Sections) (IHC (p))

Product Details

Immunogen:	This YIPF5 antibody is generated from rabbits immunized with a KLH conjugated synthetic peptide between 21-49 amino acids from the N-terminal region of human YIPF5.
Clone:	RB24202
Isotype:	Ig Fraction
Predicted Reactivity:	Pr
Purification:	This antibody is purified through a protein A column, followed by peptide affinity purification.

Target Details

Target:	YIPF5
Alternative Name:	YIPF5 (YIPF5 Products)

Target Details

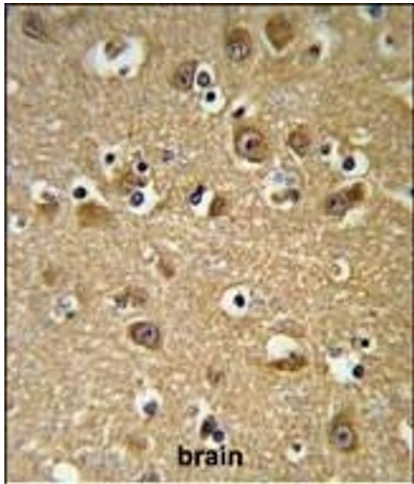
Background:	Plays a role in transport between endoplasmic reticulum and Golgi.
Molecular Weight:	27989
Gene ID:	81555
NCBI Accession:	NP_001020118 , NP_001258661 , NP_110426
UniProt:	Q969M3

Application Details

Application Notes:	WB: 1:1000. WB: 1:1000. IHC-P: 1:50~100
Restrictions:	For Research Use only

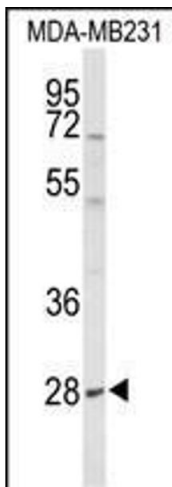
Handling

Format:	Liquid
Buffer:	Purified polyclonal antibody supplied in PBS with 0.09 % (W/V) sodium azide.
Preservative:	Sodium azide
Precaution of Use:	This product contains Sodium azide: a POISONOUS AND HAZARDOUS SUBSTANCE which should be handled by trained staff only.
Storage:	4 °C,-20 °C
Storage Comment:	Maintain refrigerated at 2-8 °C for up to 6 months. For long term storage store at -20 °C in small aliquots to prevent freeze-thaw cycles.
Expiry Date:	6 months



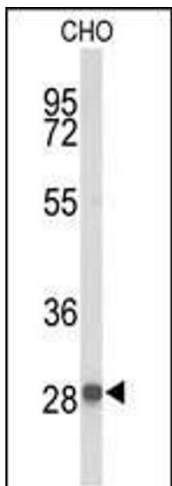
Immunohistochemistry (Paraffin-embedded Sections)

Image 1. YIPF5 Antibody (N-term) (ABIN653506 and ABIN2842912) IHC analysis in formalin fixed and paraffin embedded brain tissue followed by peroxidase conjugation of the secondary antibody and DAB staining. This data demonstrates the use of the YIPF5 Antibody (N-term) for immunohistochemistry. Clinical relevance has not been evaluated.



Western Blotting

Image 2. Western blot analysis of YIPF5 Antibody (N-term) (ABIN653506 and ABIN2842912) in MDA-M cell line lysates (35 µg/lane). YIPF5 (arrow) was detected using the purified Pab,



Western Blotting

Image 3. Western blot analysis of YIPF5 Antibody (N-term) (ABIN653506 and ABIN2842912) in CHO cell line lysates (35 µg/lane). YIPF5 (arrow) was detected using the purified Pab.