

Datasheet for ABIN653509  
**anti-RBP2 antibody (AA 56-84)**[Go to Product page](#)

## 1 Image

## Overview

Quantity:	400 µL
Target:	RBP2
Binding Specificity:	AA 56-84
Reactivity:	Human
Host:	Rabbit
Clonality:	Polyclonal
Conjugate:	This RBP2 antibody is un-conjugated
Application:	Western Blotting (WB)

## Product Details

Immunogen:	This RBP2 antibody is generated from rabbits immunized with a KLH conjugated synthetic peptide between 56-84 amino acids from the Central region of human RBP2.
Clone:	RB24213
Isotype:	Ig Fraction
Purification:	This antibody is purified through a protein A column, followed by peptide affinity purification.

## Target Details

Target:	RBP2
Alternative Name:	RBP2 ( <a href="#">RBP2 Products</a> )
Background:	RBP2 is an abundant protein present in the small intestinal epithelium. It is thought to

## Target Details

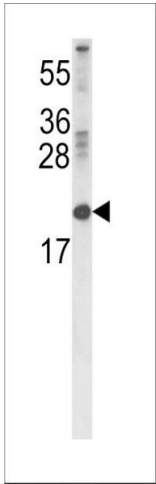
	participate in the uptake and/or intracellular metabolism of vitamin A. Vitamin A is a fat-soluble vitamin necessary for growth, reproduction, differentiation of epithelial tissues, and vision. RBP2 may also modulate the supply of retinoic acid to the nuclei of endometrial cells during the menstrual cycle.
Molecular Weight:	15707
Gene ID:	5948
NCBI Accession:	<a href="#">NP_004155</a>
UniProt:	<a href="#">P50120</a>
Pathways:	<a href="#">Chromatin Binding</a>

## Application Details

Application Notes:	WB: 1:1000
Restrictions:	For Research Use only

## Handling

Format:	Liquid
Buffer:	Purified polyclonal antibody supplied in PBS with 0.09 % (W/V) sodium azide.
Preservative:	Sodium azide
Precaution of Use:	This product contains Sodium azide: a POISONOUS AND HAZARDOUS SUBSTANCE which should be handled by trained staff only.
Storage:	4 °C,-20 °C
Storage Comment:	Maintain refrigerated at 2-8 °C for up to 6 months. For long term storage store at -20 °C in small aliquots to prevent freeze-thaw cycles.
Expiry Date:	6 months



Western Blotting

**Image 1.** Western blot analysis of RBP2 Antibody (Center) (ABIN653509 and ABIN2842914) in 293 cell line lysates (35 µg/lane). RBP2 (arrow) was detected using the purified Pab.