



[Go to Product page](#)

Datasheet for ABIN653511
anti-WIPI2 antibody (C-Term)

1 Image

Overview

Quantity:	400 µL
Target:	WIPI2
Binding Specificity:	AA 426-454, C-Term
Reactivity:	Human, Mouse
Host:	Rabbit
Clonality:	Polyclonal
Conjugate:	This WIPI2 antibody is un-conjugated
Application:	Western Blotting (WB)

Product Details

Immunogen:	This WIPI2 antibody is generated from rabbits immunized with a KLH conjugated synthetic peptide between 426-454 amino acids from the C-terminal region of human WIPI2.
Clone:	RB24217
Isotype:	Ig Fraction
Predicted Reactivity:	C, Rat
Purification:	This antibody is purified through a protein A column, followed by peptide affinity purification.

Target Details

Target:	WIPI2
Alternative Name:	WIPI2 (WIPI2 Products)

Target Details

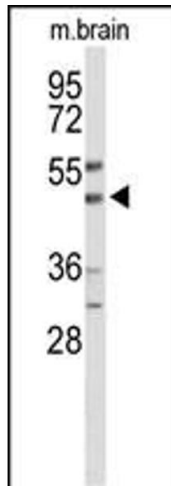
Background:	WD40 repeat proteins are key components of many essential biologic functions. They regulate the assembly of multiprotein complexes by presenting a beta-propeller platform for simultaneous and reversible protein-protein interactions. Members of the WIPI subfamily of WD40 repeat proteins, such as WIPI2, have a 7-bladed propeller structure and contain a conserved motif for interaction with phospholipids (Proikas-Cezanne et al., 2004 [PubMed 15602573]).
Molecular Weight:	49408
Gene ID:	26100
NCBI Accession:	NP_001028690 , NP_001028691 , NP_001028692 , NP_001265228 , NP_056425 , NP_057087
UniProt:	Q9Y4P8

Application Details

Application Notes:	WB: 1:1000
Restrictions:	For Research Use only

Handling

Format:	Liquid
Buffer:	Purified polyclonal antibody supplied in PBS with 0.09 % (W/V) sodium azide.
Preservative:	Sodium azide
Precaution of Use:	This product contains Sodium azide: a POISONOUS AND HAZARDOUS SUBSTANCE which should be handled by trained staff only.
Storage:	4 °C, -20 °C
Storage Comment:	Maintain refrigerated at 2-8 °C for up to 6 months. For long term storage store at -20 °C in small aliquots to prevent freeze-thaw cycles.
Expiry Date:	6 months



Western Blotting

Image 1. Western blot analysis of WIPI2 Antibody (C-term) (ABIN653511 and ABIN2842916) in mouse brain tissue lysates (35 µg/lane). WIPI2 (arrow) was detected using the purified Pab.