

Datasheet for ABIN653512
anti-SACM1L antibody (C-Term)[Go to Product page](#)

1 Image

Overview

Quantity:	400 µL
Target:	SACM1L
Binding Specificity:	AA 408-436, C-Term
Reactivity:	Human
Host:	Rabbit
Clonality:	Polyclonal
Conjugate:	This SACM1L antibody is un-conjugated
Application:	Western Blotting (WB)

Product Details

Immunogen:	This SACM1L antibody is generated from rabbits immunized with a KLH conjugated synthetic peptide between 408-436 amino acids from the C-terminal region of human SACM1L.
Clone:	RB24218
Isotype:	Ig Fraction
Predicted Reactivity:	B, Rat
Purification:	This antibody is purified through a protein A column, followed by peptide affinity purification.

Target Details

Target:	SACM1L
Alternative Name:	SACM1L (SACM1L Products)

Target Details

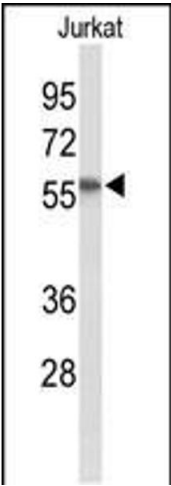
Background:	Phosphoinositide phosphatase that hydrolyzes PtdIns(3)P and PtdIns(4)P. Has low activity towards PtdIns(3,5)P2 (By similarity).
Molecular Weight:	66967
Gene ID:	22908
NCBI Accession:	NP_054735
UniProt:	Q9NTJ5
Pathways:	Inositol Metabolic Process

Application Details

Application Notes:	WB: 1:1000
Restrictions:	For Research Use only

Handling

Format:	Liquid
Buffer:	Purified polyclonal antibody supplied in PBS with 0.09 % (W/V) sodium azide.
Preservative:	Sodium azide
Precaution of Use:	This product contains Sodium azide: a POISONOUS AND HAZARDOUS SUBSTANCE which should be handled by trained staff only.
Storage:	4 °C,-20 °C
Storage Comment:	Maintain refrigerated at 2-8 °C for up to 6 months. For long term storage store at -20 °C in small aliquots to prevent freeze-thaw cycles.
Expiry Date:	6 months



Western Blotting

Image 1. Western blot analysis of SACM1L Antibody (C-term) (ABIN653512 and ABIN2842917) in Jurkat cell line lysates (35 µg/lane). SACM1L (arrow) was detected using the purified Pab.