

Datasheet for ABIN653516
anti-KIF6 antibody (N-Term)[Go to Product page](#)

1 Image

Overview

Quantity:	400 µL
Target:	KIF6
Binding Specificity:	AA 34-62, N-Term
Reactivity:	Human, Mouse
Host:	Rabbit
Clonality:	Polyclonal
Conjugate:	This KIF6 antibody is un-conjugated
Application:	Western Blotting (WB)

Product Details

Immunogen:	This KIF6 antibody is generated from rabbits immunized with a KLH conjugated synthetic peptide between 34-62 amino acids from the N-terminal region of human KIF6.
Clone:	RB24230
Isotype:	Ig Fraction
Purification:	This antibody is purified through a protein A column, followed by peptide affinity purification.

Target Details

Target:	KIF6
Alternative Name:	KIF6 (KIF6 Products)
Background:	KIF6 belongs to the kinesin-like protein family. There are four named isoforms. The KIF6

Target Details

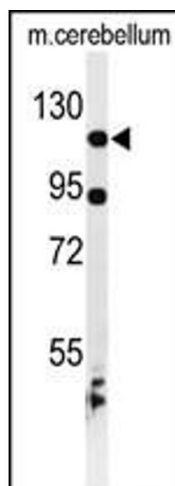
	719Arg variant has been associated with an increased risk of coronary disease and an increased response to statin therapy.
Molecular Weight:	92569
Gene ID:	221458
NCBI Accession:	NP_659464
UniProt:	Q6ZMV9

Application Details

Application Notes:	WB: 1:1000
Restrictions:	For Research Use only

Handling

Format:	Liquid
Buffer:	Purified polyclonal antibody supplied in PBS with 0.09 % (W/V) sodium azide.
Preservative:	Sodium azide
Precaution of Use:	This product contains Sodium azide: a POISONOUS AND HAZARDOUS SUBSTANCE which should be handled by trained staff only.
Storage:	4 °C,-20 °C
Storage Comment:	Maintain refrigerated at 2-8 °C for up to 6 months. For long term storage store at -20 °C in small aliquots to prevent freeze-thaw cycles.
Expiry Date:	6 months



Western Blotting

Image 1. Western blot analysis of KIF6 Antibody (N-term) (ABIN653516 and ABIN2842919) in mouse cerebellum tissue lysates (35 µg/lane). KIF6 (arrow) was detected using the purified Pab.