

Datasheet for ABIN653518  
**anti-NUPL2 antibody (N-Term)**[Go to Product page](#)

## 1 Image

## Overview

Quantity:	400 µL
Target:	NUPL2
Binding Specificity:	AA 88-115, N-Term
Reactivity:	Human
Host:	Rabbit
Clonality:	Polyclonal
Conjugate:	This NUPL2 antibody is un-conjugated
Application:	Western Blotting (WB)

## Product Details

Immunogen:	This NUPL2 antibody is generated from rabbits immunized with a KLH conjugated synthetic peptide between 88-115 amino acids from the N-terminal region of human NUPL2.
Clone:	RB24241
Isotype:	Ig Fraction
Purification:	This antibody is purified through a protein A column, followed by peptide affinity purification.

## Target Details

Target:	NUPL2
Alternative Name:	NUPL2 ( <a href="#">NUPL2 Products</a> )
Background:	Required for the export of mRNAs containing poly(A) tails from the nucleus into the cytoplasm.

## Target Details

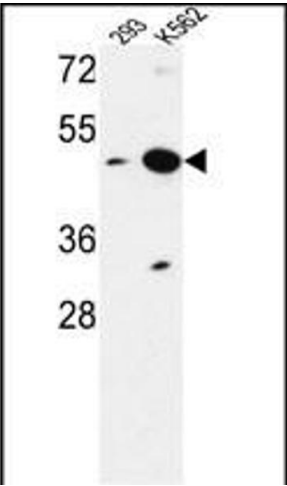
	In case of infection by HIV-1, it may participate in the docking of viral Vpr at the nuclear envelope.
Molecular Weight:	44872
Gene ID:	11097
NCBI Accession:	<a href="#">NP_031368</a>
UniProt:	<a href="#">O15504</a>

## Application Details

Application Notes:	WB: 1:1000
Restrictions:	For Research Use only

## Handling

Format:	Liquid
Buffer:	Purified polyclonal antibody supplied in PBS with 0.09 % (W/V) sodium azide.
Preservative:	Sodium azide
Precaution of Use:	This product contains Sodium azide: a POISONOUS AND HAZARDOUS SUBSTANCE which should be handled by trained staff only.
Storage:	4 °C,-20 °C
Storage Comment:	Maintain refrigerated at 2-8 °C for up to 6 months. For long term storage store at -20 °C in small aliquots to prevent freeze-thaw cycles.
Expiry Date:	6 months



Western Blotting

**Image 1.** NUPL2 Antibody (N-term) (ABIN653518 and ABIN2842921) western blot analysis in 293,K562 cell line lysates (35 µg/lane).This demonstrates the NUPL2 antibody detected the NUPL2 protein (arrow).