

Datasheet for ABIN653523  
**anti-KATNBL1 antibody (N-Term)**[Go to Product page](#)

## 1 Image

## Overview

Quantity:	400 µL
Target:	KATNBL1
Binding Specificity:	AA 47-73, N-Term
Reactivity:	Human
Host:	Rabbit
Clonality:	Polyclonal
Conjugate:	This KATNBL1 antibody is un-conjugated
Application:	Western Blotting (WB)

## Product Details

Immunogen:	This C15orf29 antibody is generated from rabbits immunized with a KLH conjugated synthetic peptide between 47-73 amino acids from the N-terminal region of human C15orf29.
Clone:	RB24274
Isotype:	Ig Fraction
Purification:	This antibody is purified through a protein A column, followed by peptide affinity purification.

## Target Details

Target:	KATNBL1
Alternative Name:	C15orf29 ( <a href="#">KATNBL1 Products</a> )
Background:	The function of the C15orf29 protein has not yet been determined.

## Target Details

Molecular Weight:	34767
Gene ID:	79768
NCBI Accession:	<a href="#">NP_078989</a>
UniProt:	<a href="#">Q9H079</a>

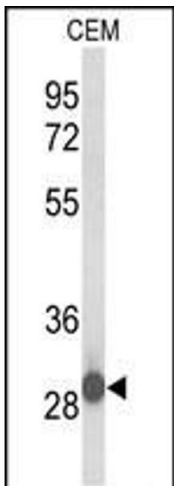
## Application Details

Application Notes:	WB: 1:1000
Restrictions:	For Research Use only

## Handling

Format:	Liquid
Buffer:	Purified polyclonal antibody supplied in PBS with 0.09 % (W/V) sodium azide.
Preservative:	Sodium azide
Precaution of Use:	This product contains Sodium azide: a POISONOUS AND HAZARDOUS SUBSTANCE which should be handled by trained staff only.
Storage:	4 °C, -20 °C
Storage Comment:	Maintain refrigerated at 2-8 °C for up to 6 months. For long term storage store at -20 °C in small aliquots to prevent freeze-thaw cycles.
Expiry Date:	6 months

## Images



### Western Blotting

**Image 1.** Western blot analysis of C15orf29 Antibody (N-term) (ABIN653523 and ABIN2842923) in CEM cell line lysates (35 µg/lane). C15orf29 (arrow) was detected using the purified Pab.