



Datasheet for ABIN653525
anti-CLPTM1L antibody (C-Term)



[Go to Product page](#)

1 Image

Overview

Quantity:	400 µL
Target:	CLPTM1L
Binding Specificity:	AA 509-538, C-Term
Reactivity:	Human
Host:	Rabbit
Clonality:	Polyclonal
Conjugate:	This CLPTM1L antibody is un-conjugated
Application:	Western Blotting (WB)

Product Details

Immunogen:	This CLPTM1L antibody is generated from rabbits immunized with a KLH conjugated synthetic peptide between 509-538 amino acids from the C-terminal region of human CLPTM1L.
Clone:	RB24286
Isotype:	Ig Fraction
Purification:	This antibody is purified through a protein A column, followed by peptide affinity purification.

Target Details

Target:	CLPTM1L
Alternative Name:	CLPTM1L (CLPTM1L Products)
Background:	CLPTM1L enhances cisplatin-mediated apoptosis, when overexpressed.

Target Details

Molecular Weight:	62229
Gene ID:	81037
NCBI Accession:	NP_110409
UniProt:	Q96KA5

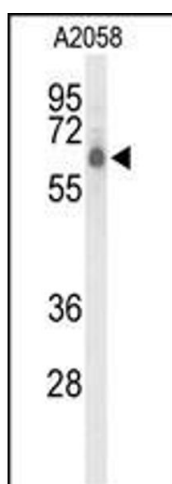
Application Details

Application Notes:	WB: 1:1000
Restrictions:	For Research Use only

Handling

Format:	Liquid
Buffer:	Purified polyclonal antibody supplied in PBS with 0.09 % (W/V) sodium azide.
Preservative:	Sodium azide
Precaution of Use:	This product contains Sodium azide: a POISONOUS AND HAZARDOUS SUBSTANCE which should be handled by trained staff only.
Storage:	4 °C,-20 °C
Storage Comment:	Maintain refrigerated at 2-8 °C for up to 6 months. For long term storage store at -20 °C in small aliquots to prevent freeze-thaw cycles.
Expiry Date:	6 months

Images



Western Blotting

Image 1. Western blot analysis of CLPTM1L Antibody (C-term) (ABIN653525 and ABIN2842924) in cell line lysates (35 µg/lane). CLPTM1L (arrow) was detected using the purified Pab.