



[Go to Product page](#)

Datasheet for ABIN653544

anti-Choline Acetyltransferase antibody (N-Term)

3 Images

Overview

Quantity:	400 µL
Target:	Choline Acetyltransferase (CHAT)
Binding Specificity:	AA 98-128, N-Term
Reactivity:	Human, Mouse
Host:	Rabbit
Clonality:	Polyclonal
Conjugate:	This Choline Acetyltransferase antibody is un-conjugated
Application:	Western Blotting (WB), Immunofluorescence (IF)

Product Details

Immunogen:	This CHAT antibody is generated from rabbits immunized with a KLH conjugated synthetic peptide between 98-128 amino acids from the N-terminal region of human CHAT.
Clone:	RB18046
Isotype:	Ig Fraction
Purification:	This antibody is prepared by Saturated Ammonium Sulfate (SAS) precipitation followed by dialysis against PBS.

Target Details

Target:	Choline Acetyltransferase (CHAT)
Alternative Name:	CHAT (CHAT Products)

Target Details

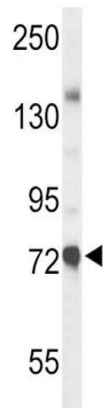
Background:	CHAT is an enzyme which catalyzes the biosynthesis of the neurotransmitter acetylcholine. This gene product is a characteristic feature of cholinergic neurons, and changes in these neurons may explain some of the symptoms of Alzheimer disease.
Molecular Weight:	82536
Gene ID:	1103
NCBI Accession:	NP_001136401 , NP_001136405 , NP_001136406 , NP_065574 , NP_066264 , NP_066265 , NP_066266
UniProt:	P28329
Pathways:	Skeletal Muscle Fiber Development

Application Details

Application Notes:	IF: 1:10~50. WB: 1:1000. WB: 1:1000
Restrictions:	For Research Use only

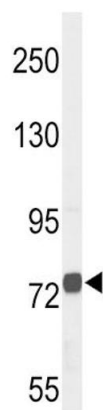
Handling

Format:	Liquid
Buffer:	Purified polyclonal antibody supplied in PBS with 0.09 % (W/V) sodium azide.
Preservative:	Sodium azide
Precaution of Use:	This product contains Sodium azide: a POISONOUS AND HAZARDOUS SUBSTANCE which should be handled by trained staff only.
Storage:	4 °C,-20 °C
Storage Comment:	Maintain refrigerated at 2-8 °C for up to 6 months. For long term storage store at -20 °C in small aliquots to prevent freeze-thaw cycles.
Expiry Date:	6 months



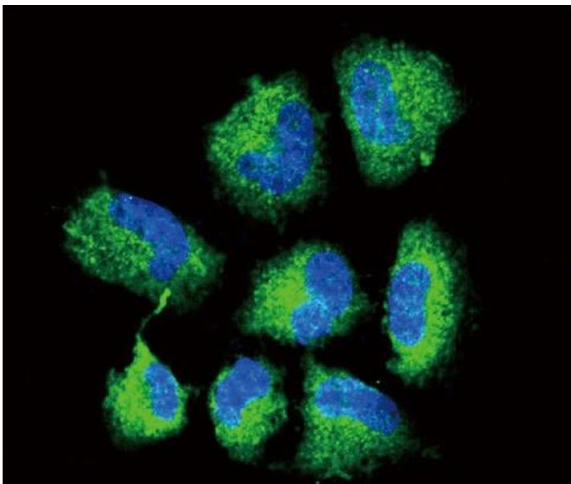
Western Blotting

Image 1. Western blot analysis of CHAT Antibody (N-term) (ABIN653544 and ABIN2842929) in mouse liver tissue lysates (35 µg/lane). CHAT (arrow) was detected using the purified Pab.



Western Blotting

Image 2. Western blot analysis of CHAT Antibody (N-term) (ABIN653544 and ABIN2842929) in NCI- cell line lysates (35 µg/lane). CHAT (arrow) was detected using the purified Pab.



Immunofluorescence

Image 3. Confocal immunofluorescent analysis of CHAT Antibody (N-term) (ABIN653544 and ABIN2842929) with NCI- cell followed by Alexa Fluor[®]488-conjugated goat anti-rabbit IgG (green). DAPI was used to stain the cell nuclear (blue).