



[Go to Product page](#)

Datasheet for ABIN653550
anti-TMEM108 antibody (C-Term)

1 Image

Overview

Quantity:	400 µL
Target:	TMEM108
Binding Specificity:	AA 524-553, C-Term
Reactivity:	Human, Mouse
Host:	Rabbit
Clonality:	Polyclonal
Conjugate:	This TMEM108 antibody is un-conjugated
Application:	Western Blotting (WB)

Product Details

Immunogen:	This TMEM108 antibody is generated from rabbits immunized with a KLH conjugated synthetic peptide between 524-553 amino acids from the C-terminal region of human TMEM108.
Clone:	RB21272
Isotype:	Ig Fraction
Predicted Reactivity:	B
Purification:	This antibody is purified through a protein A column, followed by peptide affinity purification.

Target Details

Target:	TMEM108
Alternative Name:	TMEM108 (TMEM108 Products)

Target Details

Molecular Weight:	59948
Gene ID:	66000
NCBI Accession:	NP_001129941 , NP_076432
UniProt:	Q6UXF1

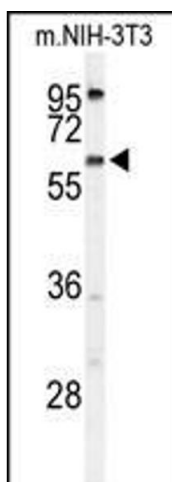
Application Details

Application Notes:	WB: 1:1000
Restrictions:	For Research Use only

Handling

Format:	Liquid
Buffer:	Purified polyclonal antibody supplied in PBS with 0.09 % (W/V) sodium azide.
Preservative:	Sodium azide
Precaution of Use:	This product contains Sodium azide: a POISONOUS AND HAZARDOUS SUBSTANCE which should be handled by trained staff only.
Storage:	4 °C, -20 °C
Storage Comment:	Maintain refrigerated at 2-8 °C for up to 6 months. For long term storage store at -20 °C in small aliquots to prevent freeze-thaw cycles.
Expiry Date:	6 months

Images



Western Blotting

Image 1. Western blot analysis of TME Antibody (C-term) (ABIN653550 and ABIN2842933) in NIH-3T3 cell line lysates (35 µg/lane). TME (arrow) was detected using the purified Pab.