

Datasheet for ABIN653552
anti-BLZF1 antibody (AA 156-184)[Go to Product page](#)

2 Images

Overview

Quantity:	400 µL
Target:	BLZF1
Binding Specificity:	AA 156-184
Reactivity:	Human
Host:	Rabbit
Clonality:	Polyclonal
Conjugate:	This BLZF1 antibody is un-conjugated
Application:	Western Blotting (WB), Immunofluorescence (IF)

Product Details

Immunogen:	This BLZF1 antibody is generated from rabbits immunized with a KLH conjugated synthetic peptide between 156-184 amino acids from the Central region of human BLZF1.
Clone:	RB21531
Isotype:	Ig Fraction
Purification:	This antibody is purified through a protein A column, followed by peptide affinity purification.

Target Details

Target:	BLZF1
Alternative Name:	BLZF1 (BLZF1 Products)
Background:	Required for normal Golgi structure and for protein transport from the endoplasmic reticulum

Target Details

(ER) through the Golgi apparatus to the cell surface.

Molecular Weight: 44910

Gene ID: 8548

NCBI Accession: [NP_003657](#)

UniProt: [Q9H2G9](#)

Application Details

Application Notes: IF: 1:10~50. WB: 1:1000

Restrictions: For Research Use only

Handling

Format: Liquid

Buffer: Purified polyclonal antibody supplied in PBS with 0.09 % (W/V) sodium azide.

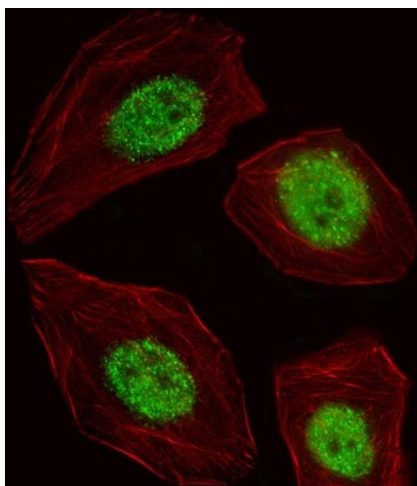
Preservative: Sodium azide

Precaution of Use: This product contains Sodium azide: a POISONOUS AND HAZARDOUS SUBSTANCE which should be handled by trained staff only.

Storage: 4 °C,-20 °C

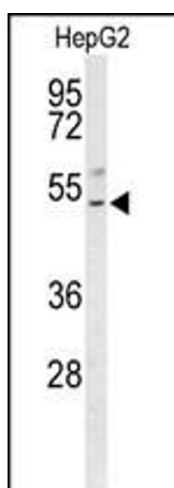
Storage Comment: Maintain refrigerated at 2-8 °C for up to 6 months. For long term storage store at -20 °C in small aliquots to prevent freeze-thaw cycles.

Expiry Date: 6 months



Immunofluorescence

Image 1. Fluorescent image of A549 cell stained with BLZF1 Antibody (Center) (ABIN653552 and ABIN2842935). A549 cells were fixed with 4 % PFA (20 min), permeabilized with Triton X-100 (0.1 %, 10 min), then incubated with BLZF1 primary antibody (1:25, 1 h at 37 °C). For secondary antibody, Alexa Fluor® 488 conjugated donkey anti-rabbit antibody (green) was used (1:400, 50 min at 37 °C). Cytoplasmic actin was counterstained with Alexa Fluor® 555 (red) conjugated Phalloidin (7 units/mL, 1 h at 37 °C). BLZF1 immunoreactivity is localized to Nucleus significantly.



Western Blotting

Image 2. Western blot analysis of BLZF1 Antibody (Center) (ABIN653552 and ABIN2842935) in HepG2 cell line lysates (35 µg/lane). BLZF1 (arrow) was detected using the purified Pab.