

Datasheet for ABIN653560
anti-DGCR6 antibody (AA 103-129)[Go to Product page](#)

1 Image

Overview

Quantity:	400 µL
Target:	DGCR6
Binding Specificity:	AA 103-129
Reactivity:	Human, Mouse
Host:	Rabbit
Clonality:	Polyclonal
Conjugate:	This DGCR6 antibody is un-conjugated
Application:	Western Blotting (WB)

Product Details

Immunogen:	This DGCR6 antibody is generated from rabbits immunized with a KLH conjugated synthetic peptide between 103-129 amino acids from the Central region of human DGCR6.
Clone:	RB22879
Isotype:	Ig Fraction
Purification:	This antibody is purified through a protein A column, followed by peptide affinity purification.

Target Details

Target:	DGCR6
Alternative Name:	DGCR6 (DGCR6 Products)
Background:	DGCR6 may play a role in neural crest cell migration into the third and fourth pharyngeal

Target Details

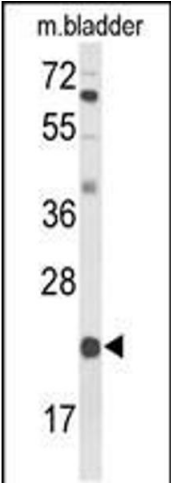
	pouches.
Molecular Weight:	24989
Gene ID:	8214
NCBI Accession:	NP_005666
UniProt:	Q14129

Application Details

Application Notes:	WB: 1:1000
Restrictions:	For Research Use only

Handling

Format:	Liquid
Buffer:	Purified polyclonal antibody supplied in PBS with 0.09 % (W/V) sodium azide.
Preservative:	Sodium azide
Precaution of Use:	This product contains Sodium azide: a POISONOUS AND HAZARDOUS SUBSTANCE which should be handled by trained staff only.
Storage:	4 °C,-20 °C
Storage Comment:	Maintain refrigerated at 2-8 °C for up to 6 months. For long term storage store at -20 °C in small aliquots to prevent freeze-thaw cycles.
Expiry Date:	6 months



Western Blotting

Image 1. Western blot analysis of DGCR6 Antibody (Center) (ABIN653560 and ABIN2842939) in mouse bladder tissue lysates (35 µg/lane). DGCR6 (arrow) was detected using the purified Pab.