

Datasheet for ABIN653562  
**anti-SLC01B1 antibody (AA 267-293)**[Go to Product page](#)

## 3 Images

## Overview

|                      |  |
|----------------------|--|
| Quantity:            | 400 µL                                 |
| Target:              | SLC01B1                                |
| Binding Specificity: | AA 267-293                             |
| Reactivity:          | Human                                  |
| Host:                | Rabbit                                 |
| Clonality:           | Polyclonal                             |
| Conjugate:           | This SLC01B1 antibody is un-conjugated |
| Application:         | Western Blotting (WB)                  |

## Product Details

|               |   |
|---------------|---|
| Immunogen:    | This SLC01B1 antibody is generated from rabbits immunized with a KLH conjugated synthetic peptide between 267-293 amino acids from the Central region of human SLC01B1. |
| Clone:        | RB23028   |
| Isotype:      | Ig Fraction   |
| Purification: | This antibody is purified through a protein A column, followed by peptide affinity purification.  |

## Target Details

|                   |   |
|-------------------|---|
| Target:           | SLC01B1   |
| Alternative Name: | SLC01B1 ( <a href="#">SLC01B1 Products</a> )  |
| Background:       | AP9609c is a liver-specific member of the organic anion transporter family. This protein is a |

## Target Details

transmembrane receptor that mediates the sodium-independent uptake of numerous endogenous compounds including bilirubin, 17-beta-glucuronosyl estradiol and leukotriene C4. This protein is also involved in the removal of drug compounds such as statins, bromosulphophthalein and rifampin from the blood into the hepatocytes. Polymorphisms in the gene encoding this protein are associated with impaired transporter function.

Molecular Weight: 76449

Gene ID: 10599

NCBI Accession: [NP\\_006437](#)

UniProt: [Q9Y6L6](#)

## Application Details

Application Notes: WB: 1:500. WB: 1:1000. WB: 1:1000

Restrictions: For Research Use only

## Handling

Format: Liquid

Buffer: Purified polyclonal antibody supplied in PBS with 0.09 % (W/V) sodium azide.

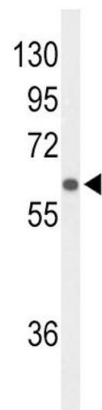
Preservative: Sodium azide

Precaution of Use: This product contains Sodium azide: a POISONOUS AND HAZARDOUS SUBSTANCE which should be handled by trained staff only.

Storage: 4 °C,-20 °C

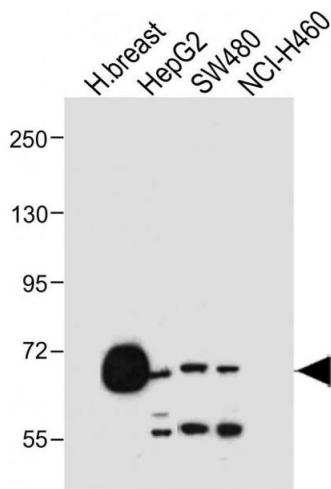
Storage Comment: Maintain refrigerated at 2-8 °C for up to 6 months. For long term storage store at -20 °C in small aliquots to prevent freeze-thaw cycles.

Expiry Date: 6 months



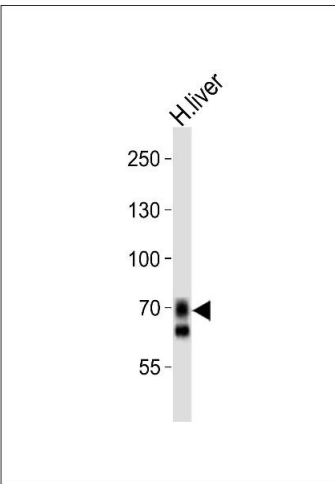
#### Western Blotting

**Image 1.** Western blot analysis of SLC01B1 Antibody (Center) (ABIN653562 and ABIN2842941) in HepG2 cell line lysates (35 µg/lane). SLC01B1 (arrow) was detected using the purified Pab.



#### Western Blotting

**Image 2.** All lanes : Anti-SLC01B1 Antibody (Center) at 1:500 dilution Lane 1: Human breast tissue lysate Lane 2: HepG2 whole cell lysate Lane 3: S whole cell lysate Lane 4: NCI- whole cell lysate Lysates/proteins at 20 µg per lane. Secondary Goat Anti-Rabbit IgG, (H+L), Peroxidase conjugated at 1/10000 dilution. Predicted band size : 76 kDa Blocking/Dilution buffer: 5 % NFDM/TBST.



#### Western Blotting

**Image 3.** Western blot analysis of lysate from human liver tissue lysate, using SLC01B1 Antibody (Center) (ABIN653562 and ABIN2842941). (ABIN653562 and ABIN2842941) was diluted at 1:1000. A goat anti-rabbit IgG H&L(HRP) at 1:10000 dilution was used as the secondary antibody. Lysate at 20 µg.