



[Go to Product page](#)

Datasheet for ABIN653566
anti-CLPB antibody (C-Term)

1 Image

Overview

Quantity:	400 µL
Target:	CLPB
Binding Specificity:	AA 673-702, C-Term
Reactivity:	Human
Host:	Rabbit
Clonality:	Polyclonal
Conjugate:	This CLPB antibody is un-conjugated
Application:	Western Blotting (WB)

Product Details

Immunogen:	This CLPB antibody is generated from rabbits immunized with a KLH conjugated synthetic peptide between 673-702 amino acids from the C-terminal region of human CLPB.
Clone:	RB23184
Isotype:	Ig Fraction
Purification:	This antibody is purified through a protein A column, followed by peptide affinity purification.

Target Details

Target:	CLPB
Alternative Name:	CLPB (CLPB Products)
Background:	CLPB may function as a regulatory ATPase and be related to secretion/protein trafficking

Target Details

process.

Molecular Weight: 78729

Gene ID: 81570

NCBI Accession: [NP_001245321](#), [NP_001245322](#), [NP_001245323](#), [NP_110440](#)

UniProt: [Q9H078](#)

Application Details

Application Notes: WB: 1:1000

Restrictions: For Research Use only

Handling

Format: Liquid

Buffer: Purified polyclonal antibody supplied in PBS with 0.09 % (W/V) sodium azide.

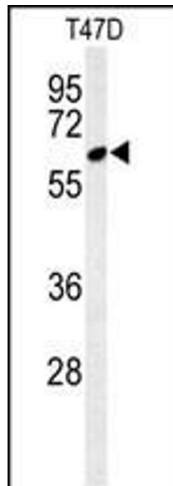
Preservative: Sodium azide

Precaution of Use: This product contains Sodium azide: a POISONOUS AND HAZARDOUS SUBSTANCE which should be handled by trained staff only.

Storage: 4 °C,-20 °C

Storage Comment: Maintain refrigerated at 2-8 °C for up to 6 months. For long term storage store at -20 °C in small aliquots to prevent freeze-thaw cycles.

Expiry Date: 6 months



Western Blotting

Image 1. Western blot analysis of CLPB Antibody (C-term) (ABIN653566 and ABIN2842942) in T47D cell line lysates (35 µg/lane). CLPB (arrow) was detected using the purified Pab.