

Datasheet for ABIN653567
anti-TLE1 antibody (AA 199-228)[Go to Product page](#)

1 Image

Overview

| | |
|----------------------|-------------------------------------|
| Quantity: | 400 µL |
| Target: | TLE1 |
| Binding Specificity: | AA 199-228 |
| Reactivity: | Human |
| Host: | Rabbit |
| Clonality: | Polyclonal |
| Conjugate: | This TLE1 antibody is un-conjugated |
| Application: | Western Blotting (WB) |

Product Details

| | |
|---------------|---|
| Immunogen: | This TLE1 antibody is generated from rabbits immunized with a KLH conjugated synthetic peptide between 199-228 amino acids from the Central region of human TLE1. |
| Clone: | RB23201 |
| Isotype: | Ig Fraction |
| Purification: | This antibody is purified through a protein A column, followed by peptide affinity purification. |

Target Details

| | |
|-------------------|---|
| Target: | TLE1 |
| Alternative Name: | TLE1 (TLE1 Products) |
| Background: | Transcriptional corepressor that binds to a number of transcription factors. Inhibits NF-kappa- |

Target Details

B-regulated gene expression. Inhibits the transcriptional activation mediated by FOXA2, and by CTNNB1 and TCF family members in Wnt signaling. The effects of full-length TLE family members may be modulated by association with dominant-negative AES. Unusual function as coactivator for ESRRG.

Molecular Weight: 83201

Gene ID: 7088

NCBI Accession: [NP_005068](#)

UniProt: [Q04724](#)

Pathways: [WNT Signaling](#), [SARS-CoV-2 Protein Interactome](#)

Application Details

Application Notes: WB: 1:1000

Restrictions: For Research Use only

Handling

Format: Liquid

Buffer: Purified polyclonal antibody supplied in PBS with 0.09 % (W/V) sodium azide.

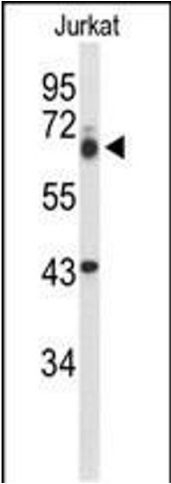
Preservative: Sodium azide

Precaution of Use: This product contains Sodium azide: a POISONOUS AND HAZARDOUS SUBSTANCE which should be handled by trained staff only.

Storage: 4 °C,-20 °C

Storage Comment: Maintain refrigerated at 2-8 °C for up to 6 months. For long term storage store at -20 °C in small aliquots to prevent freeze-thaw cycles.

Expiry Date: 6 months



Western Blotting

Image 1. Western blot analysis of TLE1 Antibody (Center) (ABIN653567 and ABIN2842943) in Jurkat cell line lysates (35 µg/lane). TLE1 (arrow) was detected using the purified Pab.