

Datasheet for ABIN653571
anti-CENPI antibody (AA 388-414)[Go to Product page](#)

1 Image

Overview

Quantity:	400 µL
Target:	CENPI
Binding Specificity:	AA 388-414
Reactivity:	Human
Host:	Rabbit
Clonality:	Polyclonal
Conjugate:	This CENPI antibody is un-conjugated
Application:	Western Blotting (WB)

Product Details

Immunogen:	This CENPI antibody is generated from rabbits immunized with a KLH conjugated synthetic peptide between 388-414 amino acids from the Central region of human CENPI.
Clone:	RB23271
Isotype:	Ig Fraction
Purification:	This antibody is purified through a protein A column, followed by peptide affinity purification.

Target Details

Target:	CENPI
Alternative Name:	CENPI (CENPI Products)
Background:	CENPI is involved in the response of gonadal tissues to follicle-stimulating hormone.

Target Details

Molecular Weight:	86720
Gene ID:	2491
NCBI Accession:	NP_006724
UniProt:	Q92674

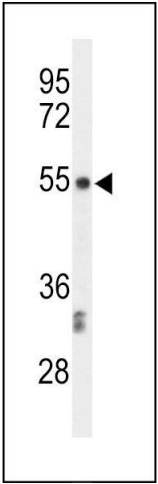
Application Details

Application Notes:	WB: 1:1000
Restrictions:	For Research Use only

Handling

Format:	Liquid
Buffer:	Purified polyclonal antibody supplied in PBS with 0.09 % (W/V) sodium azide.
Preservative:	Sodium azide
Precaution of Use:	This product contains Sodium azide: a POISONOUS AND HAZARDOUS SUBSTANCE which should be handled by trained staff only.
Storage:	4 °C,-20 °C
Storage Comment:	Maintain refrigerated at 2-8 °C for up to 6 months. For long term storage store at -20 °C in small aliquots to prevent freeze-thaw cycles.
Expiry Date:	6 months

Images



Western Blotting

Image 1. Western blot analysis of CENPI Antibody (Center) (ABIN653571 and ABIN2842947) in CEM cell line lysates (35 µg/lane). CENPI (arrow) was detected using the purified Pab.