

Datasheet for ABIN653576  
**anti-KDM4B antibody (AA 281-306)**[Go to Product page](#)

## 2 Images

## Overview

Quantity:	400 µL
Target:	KDM4B
Binding Specificity:	AA 281-306
Reactivity:	Human, Mouse
Host:	Rabbit
Clonality:	Polyclonal
Conjugate:	This KDM4B antibody is un-conjugated
Application:	Western Blotting (WB)

## Product Details

Immunogen:	This JMJD2B antibody is generated from rabbits immunized with a KLH conjugated synthetic peptide between 281-306 amino acids from human JMJD2B.
Clone:	RB23650
Isotype:	Ig Fraction
Purification:	This antibody is purified through a protein A column, followed by peptide affinity purification.

## Target Details

Target:	KDM4B
Alternative Name:	JMJD2B ( <a href="#">KDM4B Products</a> )
Background:	Histone demethylase that specifically demethylates 'Lys-9' of histone H3, thereby playing a role

## Target Details

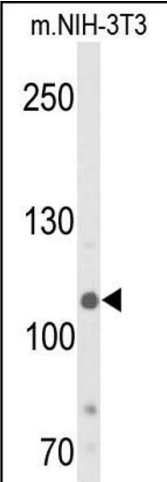
	in histone code. Does not demethylate histone H3 'Lys-4', H3 'Lys-27', H3 'Lys-36' nor H4 'Lys-20'. Only able to demethylate trimethylated H3 'Lys-9', with a weaker activity than KDM4A, KDM4C and KDM4D. Demethylation of Lys residue generates formaldehyde and succinate.
Molecular Weight:	121897
Gene ID:	23030
NCBI Accession:	<a href="#">NP_055830</a>
UniProt:	<a href="#">O94953</a>
Pathways:	<a href="#">Warburg Effect</a>

## Application Details

Application Notes:	WB: 1:1000. WB: 1:1000
Restrictions:	For Research Use only

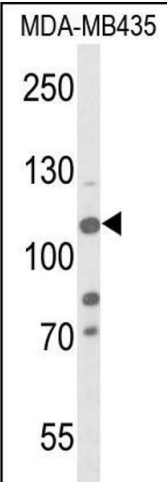
## Handling

Format:	Liquid
Buffer:	Purified polyclonal antibody supplied in PBS with 0.09 % (W/V) sodium azide.
Preservative:	Sodium azide
Precaution of Use:	This product contains Sodium azide: a POISONOUS AND HAZARDOUS SUBSTANCE which should be handled by trained staff only.
Storage:	4 °C,-20 °C
Storage Comment:	Maintain refrigerated at 2-8 °C for up to 6 months. For long term storage store at -20 °C in small aliquots to prevent freeze-thaw cycles.
Expiry Date:	6 months



**Western Blotting**

**Image 1.** Western blot analysis of JMJD2B- (ABIN653576 and ABIN2842951) in NIH-3T3 cell line lysates (35 µg/lane). JMJD2B (arrow) was detected using the purified Pab.



**Western Blotting**

**Image 2.** Western blot analysis of JMJD2B- (ABIN653576 and ABIN2842951) in MDA-M cell line lysates (35 µg/lane). JMJD2B (arrow) was detected using the purified Pab.