

Datasheet for ABIN653581
anti-HSPB6 antibody (AA 91-120)[Go to Product page](#)

1 Image

Overview

Quantity:	400 µL
Target:	HSPB6
Binding Specificity:	AA 91-120
Reactivity:	Human, Mouse
Host:	Rabbit
Clonality:	Polyclonal
Conjugate:	This HSPB6 antibody is un-conjugated
Application:	Western Blotting (WB)

Product Details

Immunogen:	This HSPB6 antibody is generated from rabbits immunized with a KLH conjugated synthetic peptide between 91-120 amino acids from the Central region of human HSPB6.
Clone:	RB24064
Isotype:	Ig Fraction
Purification:	This antibody is purified through a protein A column, followed by peptide affinity purification.

Target Details

Target:	HSPB6
Alternative Name:	HSPB6 (HSPB6 Products)
Background:	HSPB6 is associated with actin (see MIM 102540) and modulates smooth muscle relaxation

Target Details

(Tessier et al., 2003 [PubMed 12842460]).

Molecular Weight: 17136

Gene ID: 126393

NCBI Accession: [NP_653218](#)

UniProt: [O14558](#)

Application Details

Application Notes: WB: 1:1000

Restrictions: For Research Use only

Handling

Format: Liquid

Buffer: Purified polyclonal antibody supplied in PBS with 0.09 % (W/V) sodium azide.

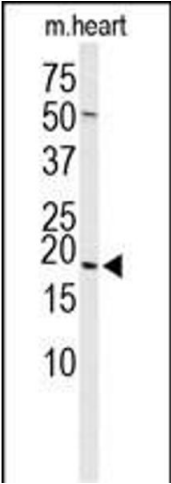
Preservative: Sodium azide

Precaution of Use: This product contains Sodium azide: a POISONOUS AND HAZARDOUS SUBSTANCE which should be handled by trained staff only.

Storage: 4 °C, -20 °C

Storage Comment: Maintain refrigerated at 2-8 °C for up to 6 months. For long term storage store at -20 °C in small aliquots to prevent freeze-thaw cycles.

Expiry Date: 6 months



Western Blotting

Image 1. Western blot analysis of HSPB6 Antibody (Center) (ABIN653581 and ABIN2842955) in mouse heart tissue lysates (35 µg/lane). HSPB6 (arrow) was detected using the purified Pab.