



Datasheet for ABIN653582
anti-BCL11A antibody (C-Term)



[Go to Product page](#)

1 Image

Overview

Quantity:	400 µL
Target:	BCL11A
Binding Specificity:	AA 806-835, C-Term
Reactivity:	Human
Host:	Rabbit
Clonality:	Polyclonal
Conjugate:	This BCL11A antibody is un-conjugated
Application:	Western Blotting (WB)

Product Details

Immunogen:	This BCL11A antibody is generated from rabbits immunized with a KLH conjugated synthetic peptide between 806-835 amino acids from the C-terminal region of human BCL11A.
Clone:	RB24071
Isotype:	Ig Fraction
Purification:	This antibody is purified through a protein A column, followed by peptide affinity purification.

Target Details

Target:	BCL11A
Alternative Name:	BCL11A (BCL11A Products)
Background:	BCL11A is a C2H2 type zinc-finger protein by its similarity to the mouse Bcl11a/Evi9 protein.

Target Details

The corresponding mouse gene is a common site of retroviral integration in myeloid leukemia, and may function as a leukemia disease gene, in part, through its interaction with BCL6.

Molecular Weight: 91197

Gene ID: 53335

NCBI Accession: [NP_060484](#), [NP_075044](#), [NP_612569](#)

UniProt: [Q9H165](#)

Pathways: [Regulation of Cell Size](#)

Application Details

Application Notes: WB: 1:1000

Restrictions: For Research Use only

Handling

Format: Liquid

Buffer: Purified polyclonal antibody supplied in PBS with 0.09 % (W/V) sodium azide.

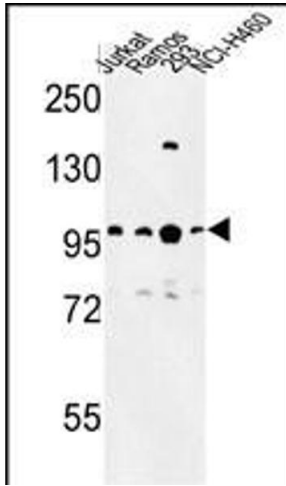
Preservative: Sodium azide

Precaution of Use: This product contains Sodium azide: a POISONOUS AND HAZARDOUS SUBSTANCE which should be handled by trained staff only.

Storage: 4 °C, -20 °C

Storage Comment: Maintain refrigerated at 2-8 °C for up to 6 months. For long term storage store at -20 °C in small aliquots to prevent freeze-thaw cycles.

Expiry Date: 6 months



Western Blotting

Image 1. Western blot analysis of BCL11A Antibody (C-term) (ABIN653582 and ABIN2842956) in Jurkat, Ramos, 293, NCI- cell line lysates (35 µg/lane). BCL11A (arrow) was detected using the purified Pab.