



[Go to Product page](#)

Datasheet for ABIN653584  
**anti-RPL36 antibody (N-Term)**

1 Image

### Overview

Quantity:	400 µL
Target:	RPL36
Binding Specificity:	AA 14-42, N-Term
Reactivity:	Human
Host:	Rabbit
Clonality:	Polyclonal
Conjugate:	This RPL36 antibody is un-conjugated
Application:	Western Blotting (WB)

### Product Details

Immunogen:	This RPL36 antibody is generated from rabbits immunized with a KLH conjugated synthetic peptide between 14-42 amino acids from the N-terminal region of human RPL36.
Clone:	RB24087
Isotype:	Ig Fraction
Predicted Reactivity:	B, C, Rat, X
Purification:	This antibody is purified through a protein A column, followed by peptide affinity purification.

### Target Details

Target:	RPL36
Alternative Name:	RPL36 ( <a href="#">RPL36 Products</a> )

## Target Details

---

**Background:** Ribosomes, the organelles that catalyze protein synthesis, consist of a small 40S subunit and a large 60S subunit. Together these subunits are composed of 4 RNA species and approximately 80 structurally distinct proteins. This gene encodes a ribosomal protein that is a component of the 60S subunit. The protein belongs to the L36E family of ribosomal proteins. It is located in the cytoplasm. Transcript variants derived from alternative splicing exist, they encode the same protein. As is typical for genes encoding ribosomal proteins, there are multiple processed pseudogenes of this gene dispersed through the genome. [provided by RefSeq].

**Molecular Weight:** 12254

**Gene ID:** 25873

**NCBI Accession:** [NP\\_056229](#), [NP\\_378669](#)

**UniProt:** [Q9Y3U8](#)

**Pathways:** [SARS-CoV-2 Protein Interactome](#)

## Application Details

---

**Application Notes:** WB: 1:1000

**Restrictions:** For Research Use only

## Handling

---

**Format:** Liquid

**Buffer:** Purified polyclonal antibody supplied in PBS with 0.09 % (W/V) sodium azide.

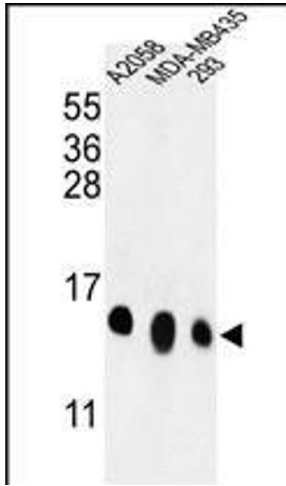
**Preservative:** Sodium azide

**Precaution of Use:** This product contains Sodium azide: a POISONOUS AND HAZARDOUS SUBSTANCE which should be handled by trained staff only.

**Storage:** 4 °C,-20 °C

**Storage Comment:** Maintain refrigerated at 2-8 °C for up to 6 months. For long term storage store at -20 °C in small aliquots to prevent freeze-thaw cycles.

**Expiry Date:** 6 months



### Western Blotting

**Image 1.** Western blot analysis of RPL36 Antibody (N-term) (ABIN653584 and ABIN2842958) in , MDA-M, 293 cell line lysates (35 µg/lane). RPL36 (arrow) was detected using the purified Pab.