

Datasheet for ABIN653593  
**anti-TAF3 antibody (C-Term)**[Go to Product page](#)

## 1 Image

## Overview

Quantity:	400 µL
Target:	TAF3
Binding Specificity:	AA 606-635, C-Term
Reactivity:	Human, Mouse
Host:	Rabbit
Clonality:	Polyclonal
Conjugate:	This TAF3 antibody is un-conjugated
Application:	Western Blotting (WB)

## Product Details

Immunogen:	This TAF3 antibody is generated from rabbits immunized with a KLH conjugated synthetic peptide between 606-635 amino acids from the C-terminal region of human TAF3.
Clone:	RB24151
Isotype:	Ig Fraction
Purification:	This antibody is purified through a protein A column, followed by peptide affinity purification.

## Target Details

Target:	TAF3
Alternative Name:	TAF3 ( <a href="#">TAF3 Products</a> )
Background:	The highly conserved RNA polymerase II transcription factor TFIID (see TAF1, MIM 313650)

## Target Details

comprises the TATA box-binding protein (TBP, MIM 600075) and a set of TBP-associated factors (TAFs), including TAF3. TAFs contribute to promoter recognition and selectivity and act as antiapoptotic factors (Gangloff et al., 2001 [PubMed 11438666]).

Molecular Weight: 103582

Gene ID: 83860

NCBI Accession: [NP\\_114129](#)

UniProt: [Q5VWG9](#)

Pathways: [Proton Transport](#), [Ribonucleoside Biosynthetic Process](#), [Maintenance of Protein Location](#)

## Application Details

Application Notes: WB: 1:1000

Restrictions: For Research Use only

## Handling

Format: Liquid

Buffer: Purified polyclonal antibody supplied in PBS with 0.09 % (W/V) sodium azide.

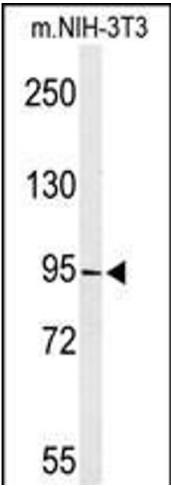
Preservative: Sodium azide

Precaution of Use: This product contains Sodium azide: a POISONOUS AND HAZARDOUS SUBSTANCE which should be handled by trained staff only.

Storage: 4 °C, -20 °C

Storage Comment: Maintain refrigerated at 2-8 °C for up to 6 months. For long term storage store at -20 °C in small aliquots to prevent freeze-thaw cycles.

Expiry Date: 6 months



Western Blotting

**Image 1.** Western blot analysis of TAF3 Antibody (C-term) (ABIN653593 and ABIN2842962) in NIH-3T3 cell line lysates (35 µg/lane). TAF3 (arrow) was detected using the purified Pab.