



[Go to Product page](#)

Datasheet for ABIN653612
anti-ECHDC1 antibody (C-Term)

1 Image

Overview

Quantity:	400 µL
Target:	ECHDC1
Binding Specificity:	AA 254-283, C-Term
Reactivity:	Human, Mouse
Host:	Rabbit
Clonality:	Polyclonal
Conjugate:	This ECHDC1 antibody is un-conjugated
Application:	Western Blotting (WB)

Product Details

Immunogen:	This ECHDC1 antibody is generated from rabbits immunized with a KLH conjugated synthetic peptide between 254-283 amino acids from the C-terminal region of human ECHDC1.
Clone:	RB24367
Isotype:	Ig Fraction
Predicted Reactivity:	Rat
Purification:	This antibody is purified through a protein A column, followed by peptide affinity purification.

Target Details

Target:	ECHDC1
Alternative Name:	ECHDC1 (ECHDC1 Products)

Target Details

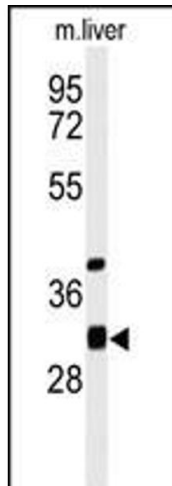
Background:	ECHDC1 belongs to the enoyl-CoA hydratase/isomerase family. There are two named isoforms.
Molecular Weight:	33698
Gene ID:	55862
NCBI Accession:	NP_001002030 , NP_001099014 , NP_001099015 , NP_001132982 , NP_060949
UniProt:	Q9NTX5

Application Details

Application Notes:	WB: 1:1000
Restrictions:	For Research Use only

Handling

Format:	Liquid
Buffer:	Purified polyclonal antibody supplied in PBS with 0.09 % (W/V) sodium azide.
Preservative:	Sodium azide
Precaution of Use:	This product contains Sodium azide: a POISONOUS AND HAZARDOUS SUBSTANCE which should be handled by trained staff only.
Storage:	4 °C,-20 °C
Storage Comment:	Maintain refrigerated at 2-8 °C for up to 6 months. For long term storage store at -20 °C in small aliquots to prevent freeze-thaw cycles.
Expiry Date:	6 months



Western Blotting

Image 1. Western blot analysis of ECHDC1 Antibody (C-term) (ABIN653612 and ABIN2842972) in mouse liver tissue lysates (35 µg/lane). ECHDC1 (arrow) was detected using the purified Pab.