

Datasheet for ABIN653616
anti-GSPT2 antibody (AA 216-245)[Go to Product page](#)

1 Image

Overview

Quantity:	400 µL
Target:	GSPT2
Binding Specificity:	AA 216-245
Reactivity:	Human, Mouse
Host:	Rabbit
Clonality:	Polyclonal
Conjugate:	This GSPT2 antibody is un-conjugated
Application:	Western Blotting (WB)

Product Details

Immunogen:	This ERF3B antibody is generated from rabbits immunized with a KLH conjugated synthetic peptide between 216-245 amino acids from the Central region of human ERF3B.
Clone:	RB24380
Isotype:	Ig Fraction
Purification:	This antibody is purified through a protein A column, followed by peptide affinity purification.

Target Details

Target:	GSPT2
Alternative Name:	ERF3B (GSPT2 Products)
Background:	ERF3B encodes a GTPase that belongs to the GTP-binding elongation factor family. The

Target Details

encoded protein is a polypeptide release factor that complexes with eukaryotic peptide chain release factor 1 to mediate translation termination. This protein may also be involved in mRNA stability.

Molecular Weight: 68883

Gene ID: 23708

NCBI Accession: [NP_060564](#)

UniProt: [Q8IYD1](#)

Application Details

Application Notes: WB: 1:1000

Restrictions: For Research Use only

Handling

Format: Liquid

Buffer: Purified polyclonal antibody supplied in PBS with 0.09 % (W/V) sodium azide.

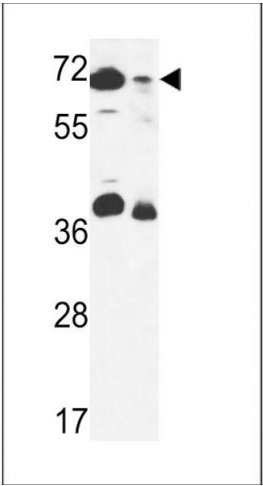
Preservative: Sodium azide

Precaution of Use: This product contains Sodium azide: a POISONOUS AND HAZARDOUS SUBSTANCE which should be handled by trained staff only.

Storage: 4 °C, -20 °C

Storage Comment: Maintain refrigerated at 2-8 °C for up to 6 months. For long term storage store at -20 °C in small aliquots to prevent freeze-thaw cycles.

Expiry Date: 6 months



Western Blotting

Image 1. ERF3B Antibody (Center) (ABIN653616 and ABIN2842974) western blot analysis in 293 cell line and mouse stomach tissue lysates (35 µg/lane). This demonstrates the ERF3B antibody detected the ERF3B protein (arrow).